

VORTAC KOA	APP CRS	Rwy Ldg	7000
112.1	171°	TDZE	45
Chan 58		Apt Elev	45

VOR or TACAN RWY 17
ELLISON ONIZUKA KONA INTL AT KEAHOLE (KOA) (PHKO)

DME required.

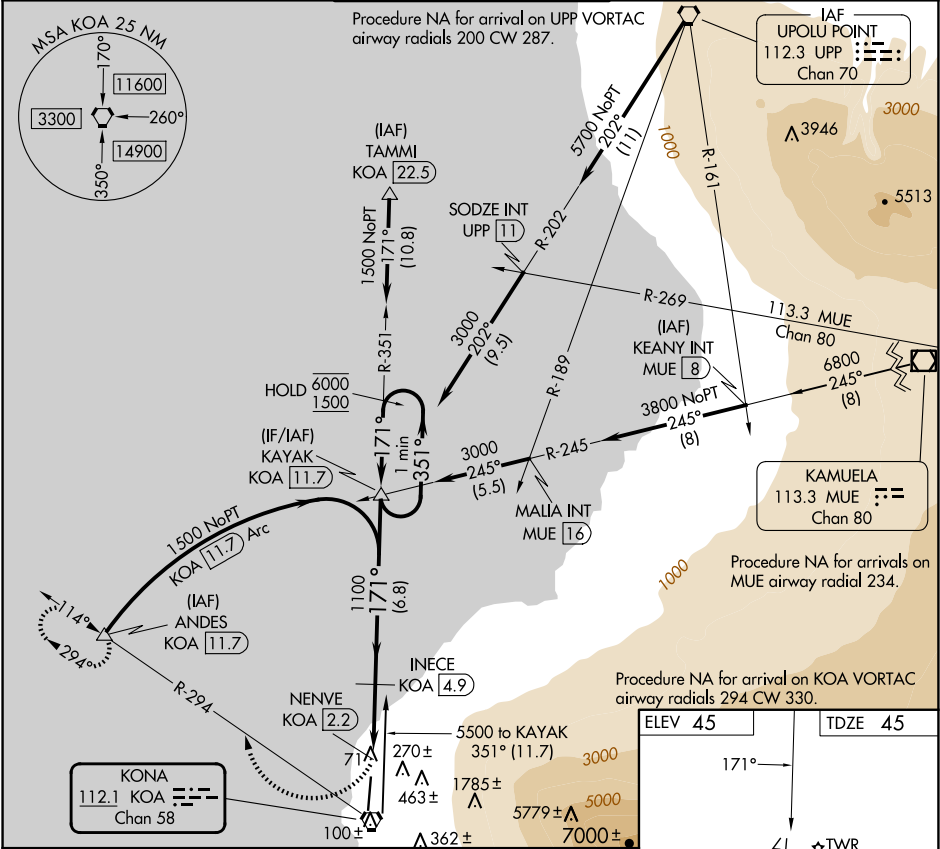
▼

⚠

Circling NA east of Rwy 17-35. For inop ALS, increase S-17 Cat E visibility to 1½ SM.

MISSED APPROACH: Climbing right turn to 1800 on KOA VORTAC R-294 to ANDES/KOA 11.7 DME and hold.

ATIS	HCF CENTER	KONA TOWER★	GND CON	CINC DEL
127.4	118.45 278.3	120.3 (CTAF) 254.3	121.9	118.6



One Minute Holding Pattern

6000

1500

351°

171°

171°

VGSI and descent angles not coincident (VGSI Angle 3.00/TCH 60).

6.8 NM

1.8 NM

0.9

0.7

KAYAK KOA [11.7]

INECE KOA [4.9]

KOA [3.1]

NENVE KOA [2.2]

1800

ANDES

KOA R-294

270±

351° (11.7)

5500 to KAYAK

1785±

5779±

7000±

362±

100±

71

1100

2.82°

TCH 54

CATEGORY	A	B	C	D	E
S-17	600-½	555 (600-½)	600-1½	555 (600-1½)	
CIRCLING	600-1	555 (600-1)	600-1½	555 (600-1½)	600-2 555 (600-2)

ELEV 45

TDZE 45

171°

7000 X 150

35

★ TWR

REIL Rwy 17

HIRL Rwy 17-35

PAC, 07 AUG 2025 to 02 OCT 2025

PAC, 07 AUG 2025 to 02 OCT 2025