

APP CRS	Rwy Ldg	7000
174°	TDZE	47
	Apt Elev	47

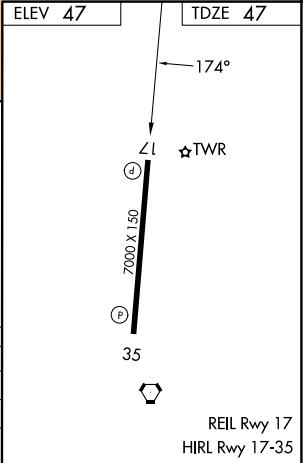
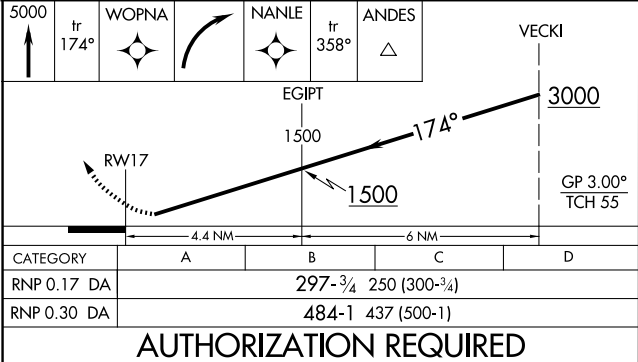
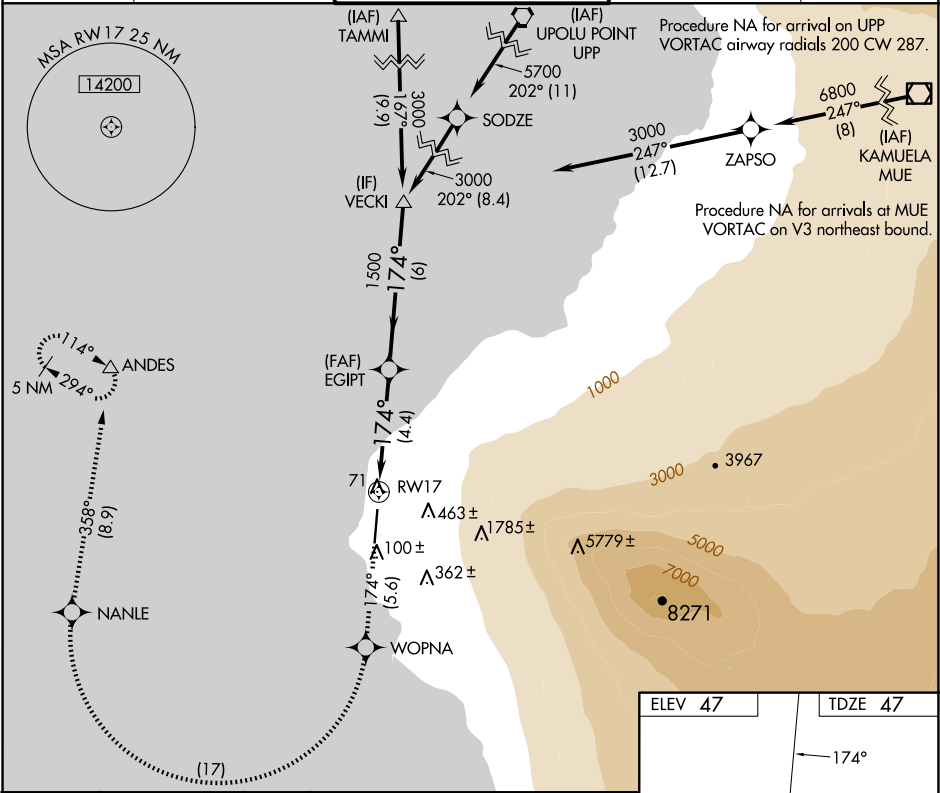
RNAV (RNP) Z RWY 17

ELLISON ONIZUKA KONA INTL AT KEAHOLE (KOA) (PHKO)

For uncompensated Baro-VNAV systems, procedure NA below 6°C (43°F) or above 48°C (119°F). RF required. GPS required.
For inop ALS, increase RNP 0.30 all Cats visibility to 1½ mile.

MISSED APPROACH: Climb to 5000 on track 174° to WOPNA and right turn to NANLE, and on track 358° to ANDES and hold.

ATIS 127.4	HCF CENTER 118.45 278.3	KONA TOWER ★ 120.3(CTAF) 254.3	GND CON 121.9	CLNC DEL 118.6
---------------	----------------------------	-----------------------------------	------------------	-------------------



PAC, 07 AUG 2025 to 02 OCT 2025

PAC, 07 AUG 2025 to 02 OCT 2025