

LOC/DME I-KOA	APP CRS	Rwy Ldg	7000
109.7	174°	TDZE	49
Chan 34		Apt Elev	49

ILS or LOC RWY 17

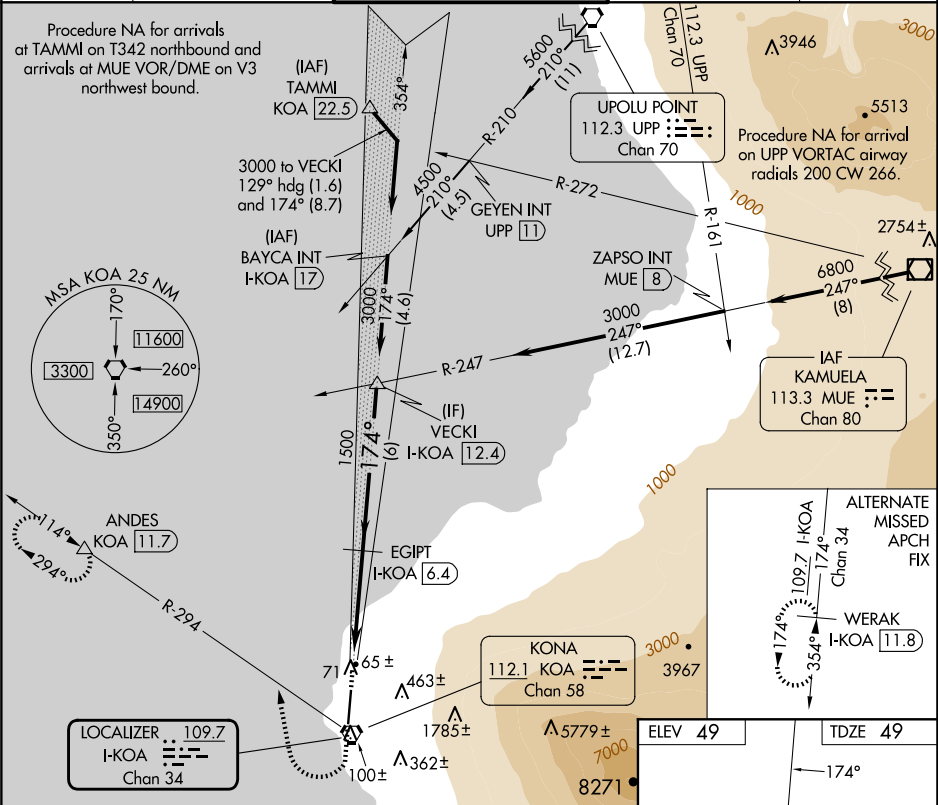
ELLISON ONIZUKA KONA INTL AT KEAHOLE (KOA)(PHKO)

DME required.

Autopilot coupled approach NA below 500. Circling NA east of Rwy 17-35. For inop ALS, increase S-ILS 17 Cat E visibility to ¾ SM and S-LOC 17 Cats C, D, E visibility to 1 SM.

MISSED APPROACH: Climb to 460 then climbing right turn to 5000 on KOA VORTAC R-294 to ANDES/KOA VORTAC 11.7 DME and hold, continue climb-in-hold to 5000.

ATIS	HCF CENTER	KONA TOWER★	GND CON	CLNC DEL
127.4	118.45 278.3	120.3(CTAF) 254.3	121.9	118.6



460	5000	ANDES	VGSI and ILS glidepath not coincident (VGSI Angle 3.00/TCH 60).			VECKI			
↑	↘	△				I-KOA [12.4]			
Use I-KOA DME when on the localizer course.									
CATEGORY	A	B	C	D	E				
S-ILS 17	249-½ 200 (200-½)								
S-LOC 17	400-½ 351 (400-½)		400-⅝ 351 (400-⅝)						
CIRCLING	520-1 471 (500-1)		520-1½ 471 (500-1½)		600-2 551 (600-2)				

ELEV 49

TDZE 49

174°

☆ TWR

35

REIL Rwy 17

HIRL Rwy 17-35