

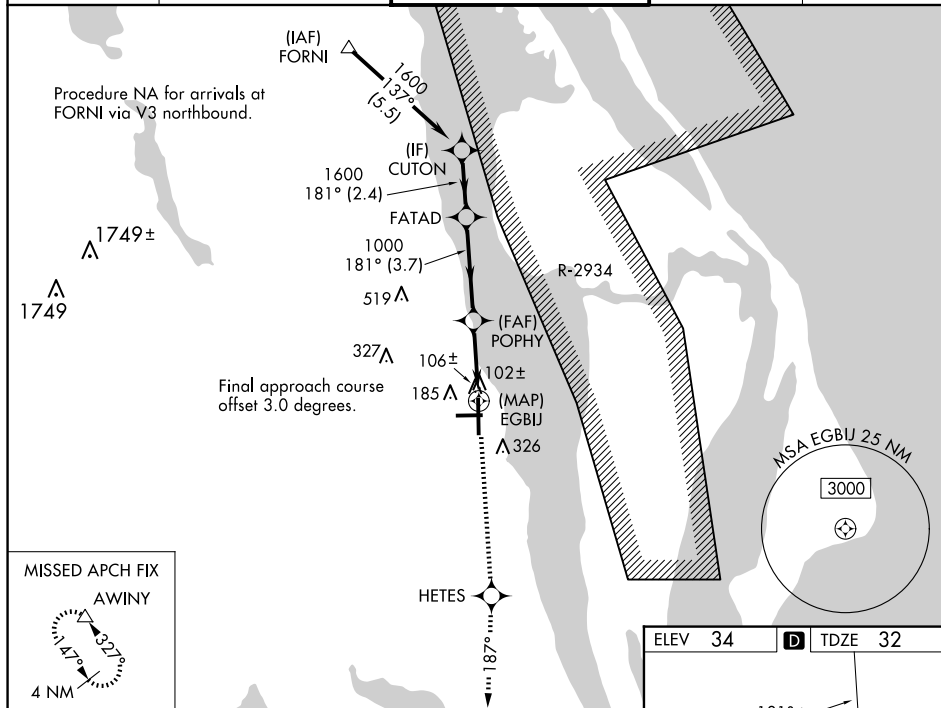
WAAS CH 56612 W18B	APP CRS 181°	Rwy Idg 6930 TDZE 32 Apt Elev 34
--	------------------------	---

RNAV (GPS) Z RWY 18
SPACE COAST RGNL (TIX)

T Baro-VNAV NA when using Melbourne altimeter setting. For uncompensated Baro-VNAV systems, LNAV/VNAV NA below -15°C (5°F) or above 47°C (116°F). DME/DME RNP-0.3 NA. Visibility reduction by helicopters NA. When control tower closed, use Melbourne altimeter setting.

MISSED APPROACH: Climb to 3000 direct HETES and via track 187° to AWINY and hold.

ATIS 120.625	ORLANDO APP CON 134.95 281.425	SPACE COAST TOWER ★ 118.9 (CTAF) 0	GND CON 121.85	UNICOM 122.95
------------------------	--	--	--------------------------	-------------------------



VGSi and RNAV glidepath not coincident (VGSi Angle 3.00/TCH 44).				3000 ↑	HETES ✦	tr 187°	AWINY △
Procedure Turn NA	CUTON	FATAD		POPHY			
1600	181°	1600	187°	1000			EGBUJ
GP 3.00° TCH 50							
2.4 NM		3.7 NM		2.9 NM			
CATEGORY	A	B	C	D			
LPV DA	332-1		300 (300-1)				
RNAV/ VNAV DA	377-1¼		345 (400-1¼)				
MELBOURNE ALTIMETER SETTING MINIMUMS							
RNAV/ VNAV DA	437-1½		405 (500-1½)				

