

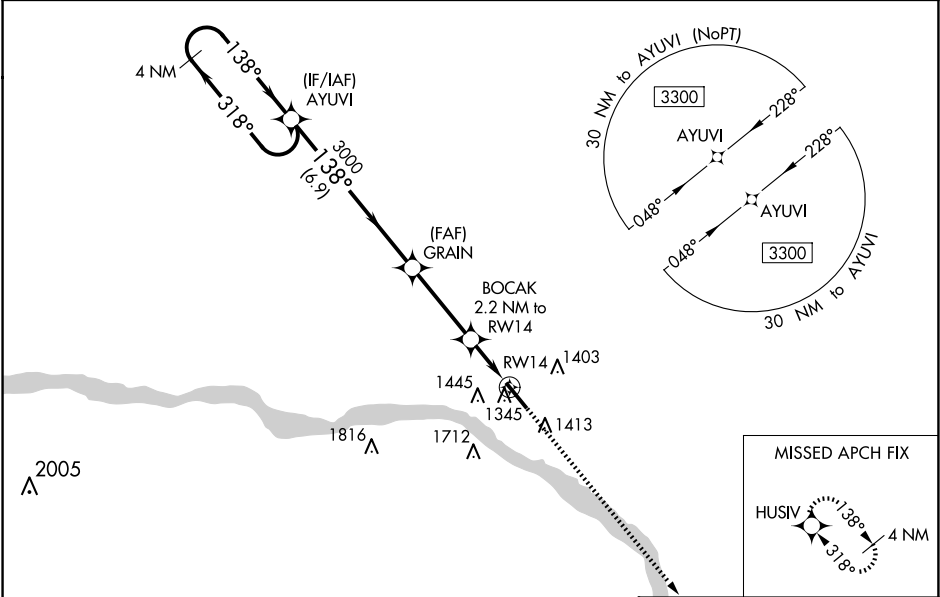
|  |                        |                             |   |
|--|------------------------|-----------------------------|---|
| WAAS<br>CH <b>82403</b><br><b>W14A</b> | APP CRS<br><b>138°</b> | Rwy Idg<br>TDZE<br>Apt Elev | <b>4650</b><br><b>1204</b><br><b>1204</b> |
|--|------------------------|-----------------------------|---|

RNAV (GPS) RWY 14  
FREMONT MUNI (F'ET)

**⚠** For uncompensated Baro-VNAV systems, LNAV/VNAV NA below -17°C (2°F) or above 54°C (130°F). DME/DME RNP-0.3 NA. Helicopter visibility reduction below 1 SM NA. When local altimeter setting not received, use Blair altimeter setting and increase all DA/MDA 60 feet; increase LNAV/VNAV all Cats visibility 1/8 mile, and LNAV Cat C visibility 1/4 mile. Baro-VNAV and VDP NA when using Blair altimeter setting.

**MISSED APPROACH:**  
Climb to 3800 direct HUSIV and hold.

|                          |  |                                 |
|--------------------------|--|---------------------------------|
| AWOS-3<br><b>121.275</b> | OMAHA APP CON<br><b>135.875 354.05</b> | UNICOM<br><b>122.8 (CTAF) 0</b> |
|--------------------------|--|---------------------------------|



ELEV 1204 **D** TDZE 1204

4 NM Holding Pattern AYUVI

3300 ← 318° 138° →

GP 3.00° TCH 40

3000

GRAIN

BOCAK 2.2 NM to RW14

\*1.1 NM to RW14

RW14

\*1940

\*LNAV only

3800 HUSIV

138°

635° X 100

1260

REIL Rwy 14 0

MIRL Rwy 14-32

| CATEGORY          | A      | B           | C                             | D  |
|-------------------|--------|-------------|-------------------------------|----|
| LPV DA            | 1454-1 | 250 (300-1) |                               | NA |
| LNAV/ VNAV DA     | 1496-1 | 292 (300-1) |                               | NA |
| LNAV MDA          | 1600-1 | 396 (400-1) | 1600-1 1/8<br>396 (400-1 1/8) | NA |
| <b>C</b> CIRCLING | 1760-1 | 556 (600-1) | 2020-2 1/2<br>816 (900-2 1/2) | NA |

NC-2, 07 AUG 2025 to 04 SEP 2025

NC-2, 07 AUG 2025 to 04 SEP 2025