

APP CRS
216°

Rwy Idg
5004

TDZE
717

Apt Elev
717

RNAV (GPS) RWY 22

SHARP COUNTY RGNL (CVK)

RNP APCH.

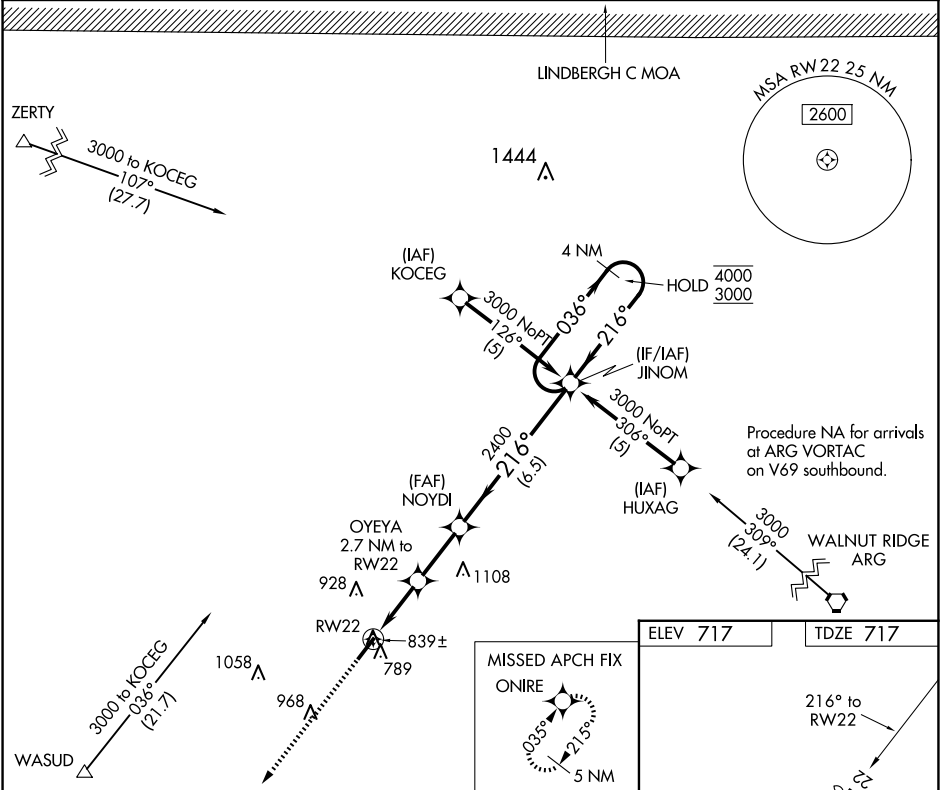
T

NA

Rwy 22 helicopter visibility reduction below ¾ SM NA. Circling Rwy 4 NA at night. Use Walnut Ridge Rgnl altimeter setting; when not received, use Jonesboro Municipal altimeter setting and increase all MDAs 60 feet, increase LNAV Cat C visibility ½ SM and Circling Cat C visibility ¼ SM.

MISSED APPROACH: Climb to 3000 direct ONIRE and hold.

| | | |
|--------------------------------|--|---------------------------------|
| ARG AWOS-3PT 126.525 | MEMPHIS CENTER 120.075 289.4 | UNICOM 122.7 (CTAF) 0 |
|--------------------------------|--|---------------------------------|



3000

ONIRE

VGSI and RNAV glidepath not coincident (VGSI Angle 3.00/TCH40).

OYEYA
2.7 NM to RW22

NOYDI

JINOM

4 NM Holding Pattern

3.04°

TCH 40

216°

036°

4000

3000

1600

2400

2.7 NM

2.4 NM

6.5 NM

216° to RW22

0.9% UP

5138 X 75

MIRL Rwy 4-22 0

| CATEGORY | A | B | C | D |
|----------|--------|-------------|-------------------------------|----|
| LNAV MDA | 1360-1 | 643 (700-1) | 1360-1 7/8 643 (700-1 7/8) | NA |
| CIRCLING | 1400-1 | 683 (700-1) | 1420-2 703 (800-2) | NA |