

BAYTOWN, TEXAS

AL-5757 (FAA)

22223

| | | |
|------------------------|-----------------------------|---------------------------------------|
| APP CRS 320° | Rwy Idg TDZE Apt Elev | 3283 28 34 |
|------------------------|-----------------------------|---------------------------------------|

RNAV (GPS) RWY 32
BAYTOWN (HPY)

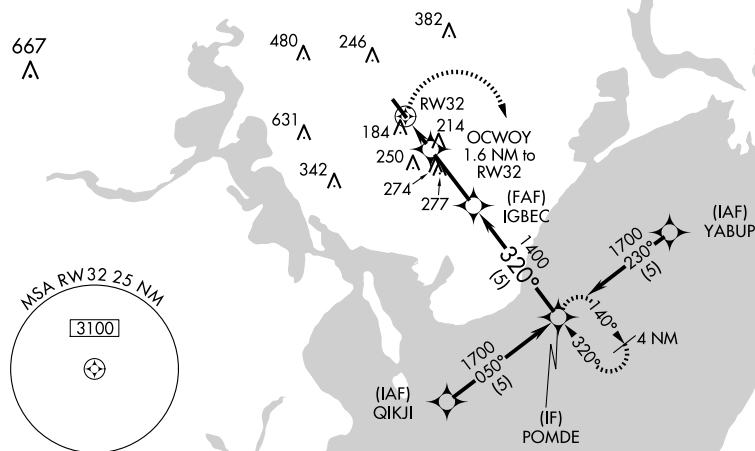
RNP APCH-GPS.

T Circling NA at night. Rwy14 helicopter visibility reduction below
A NA 1 SM NA. Obtain local altimeter setting on CTAF; when not received,
 use William P Hobby altimeter setting and increase all MDA 60 feet.

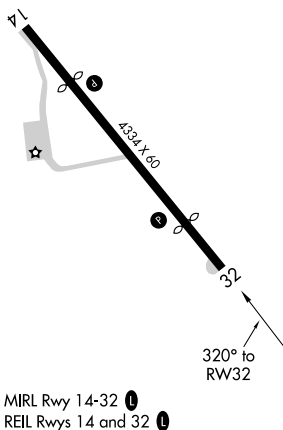
MISSED APPROACH:
Climbing right turn to 2000
direct to POMDE and hold.

HOUSTON APP CON
134.45 281.4

UNICOM
122.8 (CTAF) **L**



| | | | | |
|------|----|----------|------|----|
| ELEV | 34 | D | TDZE | 28 |
|------|----|----------|------|----|



2000 POMDE VGS angle and descent angles not coincident (VGS Angle 3.00/TCH 20). POMDE

OCWOY 1.6 NM to RW32

IGBEC

320°

1700

1400

640

≤ 3.37° TCH 40

1.6 NM 2.5 NM 5 NM

| CATEGORY | A | B | C | D |
|----------|----------------------|----------------------|---|----|
| RNAV MDA | 520-1 | 492 (500-1) | | NA |
| CIRCLING | 520-1 486 (500-1) | 560-1 526 (600-1) | | NA |

BAYTOWN, TEXAS
Orig-B 11AUG22

29°47'N-94°57'W

BAYTOWN (HPY)
RNAV (GPS) RWY 32

SC-5, 07 AUG 2025 to 04 SEP 2025

SC-5, 07 AUG 2025 to 04 SEP 2025