

WAAS  
CH **93835**  
**W22A**

APP CRS  
**220°**

Rwy Idg  
TDZE **182**  
Apt Elev **182**

RNAV (GPS) RWY 22

DEXTER B FLORENCE MEML FLD (ADF')

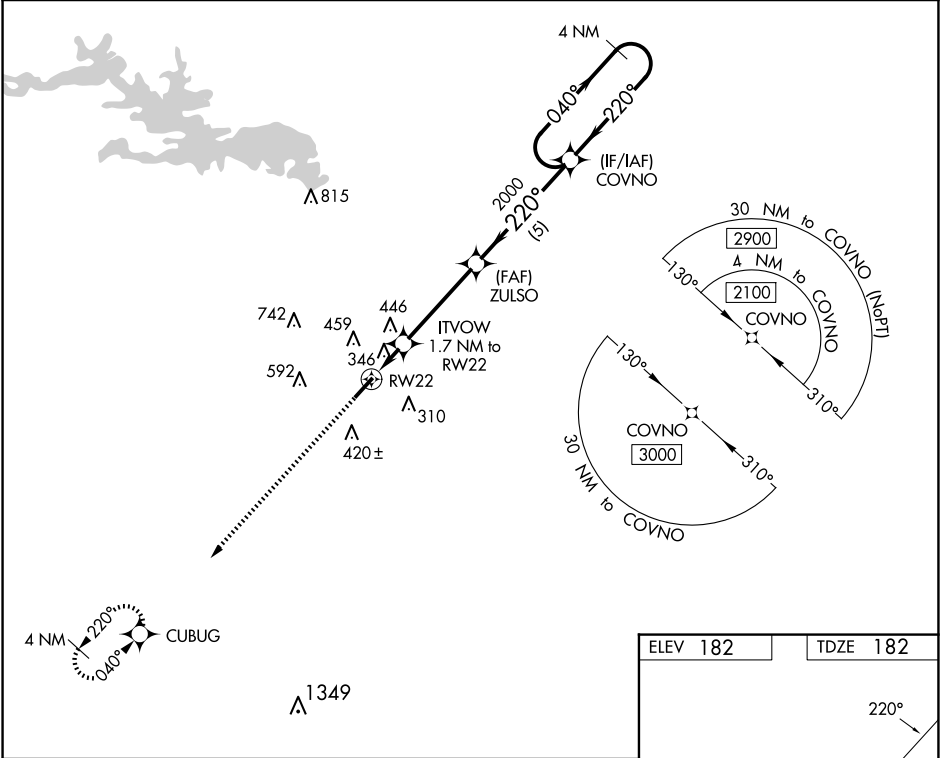
▼

▲ NA

DME/DME RNP-0.3 NA. When local altimeter setting not received, use Hot Springs altimeter setting and increase all MDAs 120 feet, and increase LP and LNAV Cat C visibility ⅔ SM and Circling Cat C visibility ½ mile. Night landing: Rwy 22 NA. Helicopter visibility reduction below 1 NM NA.

MISSED APPROACH: Climb to 2000 direct CUBUG and hold.

AWOS-3PT <b>118.175</b>	MEMPHIS CENTER <b>128.475 377.15</b>	UNICOM <b>122.7 (CTAF) 0</b>
----------------------------	---	---------------------------------



2000	CUBUG	Visual Segment - Obstacles.			
		ITVOW 1.7 NM to RW22	ZULSO	COVNO	4 NM Holding Pattern
		760	2000	2100	
		1.7	3.9 NM	5 NM	
CATEGORY	A	B	C	D	
LP MDA	600-1	418 (500-1)	600-1⅓ 418 (500-1⅓)	NA	
LNAV MDA	680-1	498 (500-1)	680-1⅓ 498 (500-1⅓)	NA	
CIRCLING	760-1 578 (600-1)	800-1 618 (700-1)	1040-2½ 858 (900-2½)	NA	

