

MANKATO, MINNESOTA

AL-5755 (FAA)

23334

WAAS CH <b>86315</b> <b>W33A</b>	APP CRS <b>335°</b>	Rwy Idg <b>6600</b> TDZE <b>1021</b> Apt Elev <b>1021</b>
--	------------------------	---

RNAV (GPS) RWY 33  
MANKATO RGNL (MKT)

MANKATO RGNL (MKT)

RNP APCH - GPS.

**T** For uncompensated Baro-VNAV systems, LNAV/VNAV NA below -17°C or above 54°C. For inop ALS, increase LNAV/VNAV all Cats visibility to  $\frac{3}{8}$  SM and LNAV Cats C and D visibility to 1 SM.

MALSR



MISSED APPROACH: Climb to 2700 direct HIBOG and hold.


AWOS-3PT

118.175

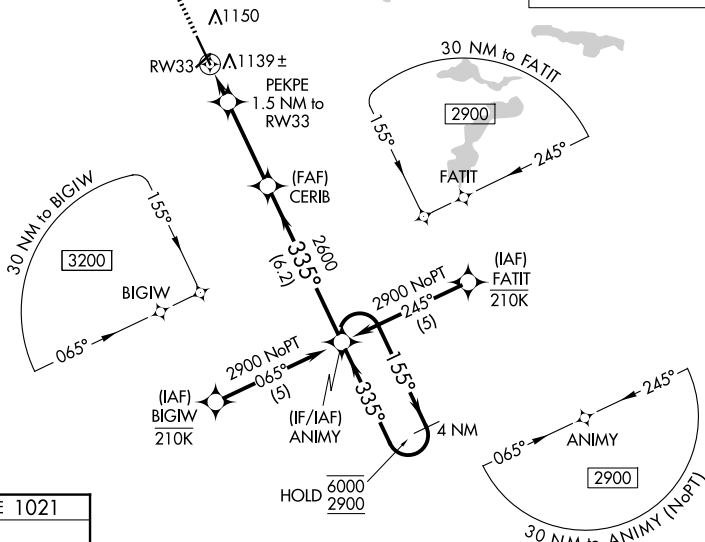
MINNEAPOLIS CENTER

135.0 306.9

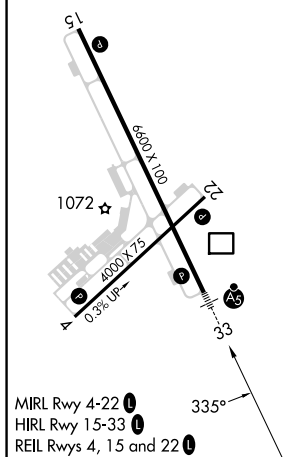
UNICOM

122.725 (CTAF) 

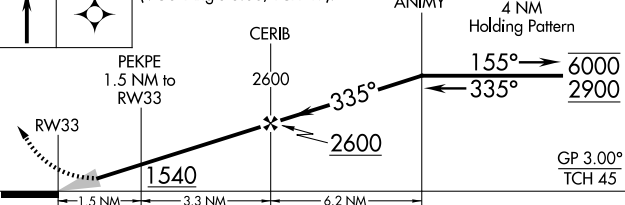
MISSED APCH FIX



ELEV 1021		TDZE 1021
-----------	--	-----------



2700	HIBOG	VGSI and RNAV glidepath not coincident (VGSI Angle 3.00/TCH 49).
------	-------	--



CATEGORY		A	B	C	D
LPV	DA	1221-½ 200 (200-½)			
RNAV/ VNAV	DA	1320-½ 299 (300-½)			
RNAV MDA		1400-½ 379 (400-½)		1400-⅝ 379 (400-⅝)	
CIRCLING		1460-1 439 (500-1)	1480-1 459 (500-1)	1600-1½ 579 (600-1½)	1600-2 579 (600-2)

MANKATO, MINNESOTA

Amdt 1 30NOV23

MANKATO REGIONAL (MKT)

44°13'N-93°55'W

RNAV (GPS) RWY 33

NC-1, 07 AUG 2025 to 04 SEP 2025