

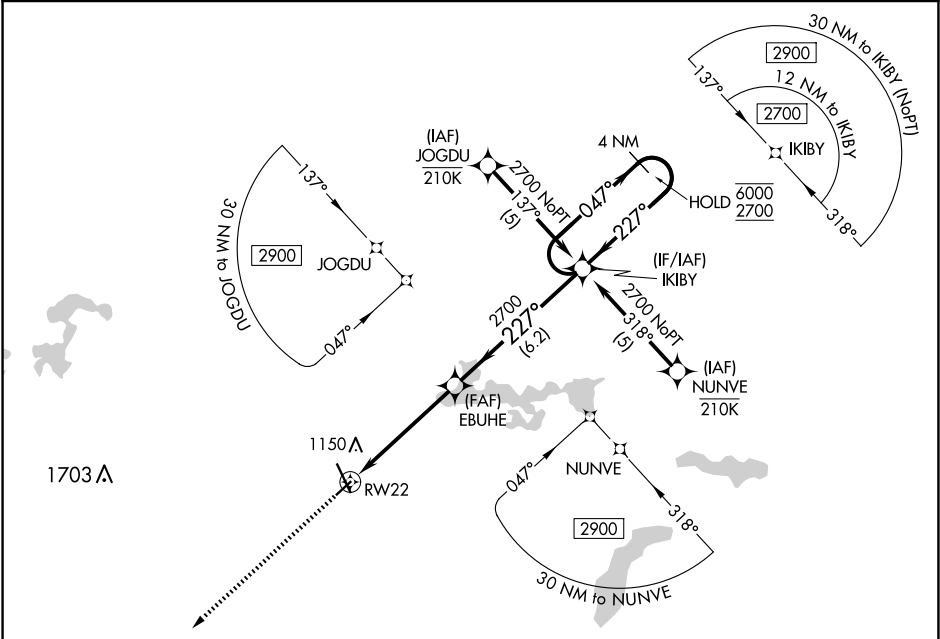
APP CRS <b>227°</b>	Rwy Idg	<b>4000</b>
	TDZE	<b>1021</b>
	Apt Elev	<b>1021</b>

RNAV (GPS) RWY 22

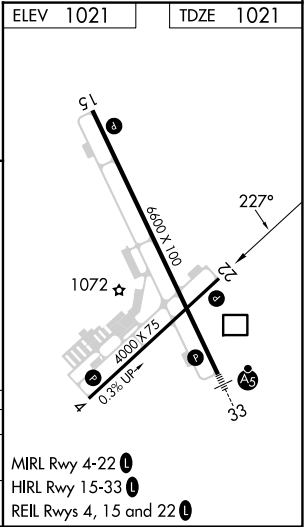
MANKATO RGNL (MKT)

RNP APCH - GPS.	MISSED APPROACH: Climb to 2700 direct KABGE and hold.
<div><div></div><div></div></div> Rwy 22 helicopter visibility reduction below 1 SM NA.	

AWOS-3PT <b>118.175</b>	MINNEAPOLIS CENTER <b>135.0 306.9</b>	UNICOM <b>122.725 (CTAF) 0</b>
----------------------------	--	-----------------------------------



<div><div>2700</div><div>KABGE</div></div>	VGSI and descent angles not coincident (VGSI Angle 3.00/TCH 26).			
	<div><div>EBUHE</div><div>IKIBY</div><div>4 NM Holding Pattern</div><div>1.6 NM to RWY 22</div><div>3.5 NM</div><div>6.2 NM</div><div>2700</div><div>227°</div><div>047°</div><div>6000</div><div>2700</div><div>≤ 3.04° TCH 40</div></div>			
CATEGORY	A	B	C	D
LNVA MDA	1560-1	539 (600-1)	1560-1½ 539 (600-1½)	NA
CIRCLING	1560-1	539 (600-1)	1600-1½ 579 (600-1½)	NA



NC-1, 07 AUG 2025 to 04 SEP 2025

NC-1, 07 AUG 2025 to 04 SEP 2025