

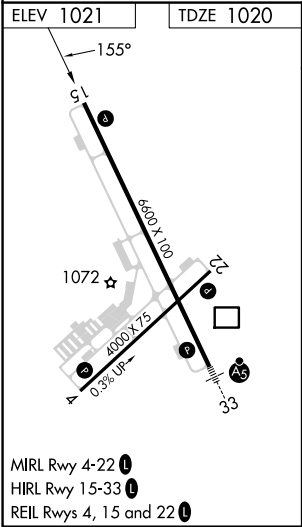
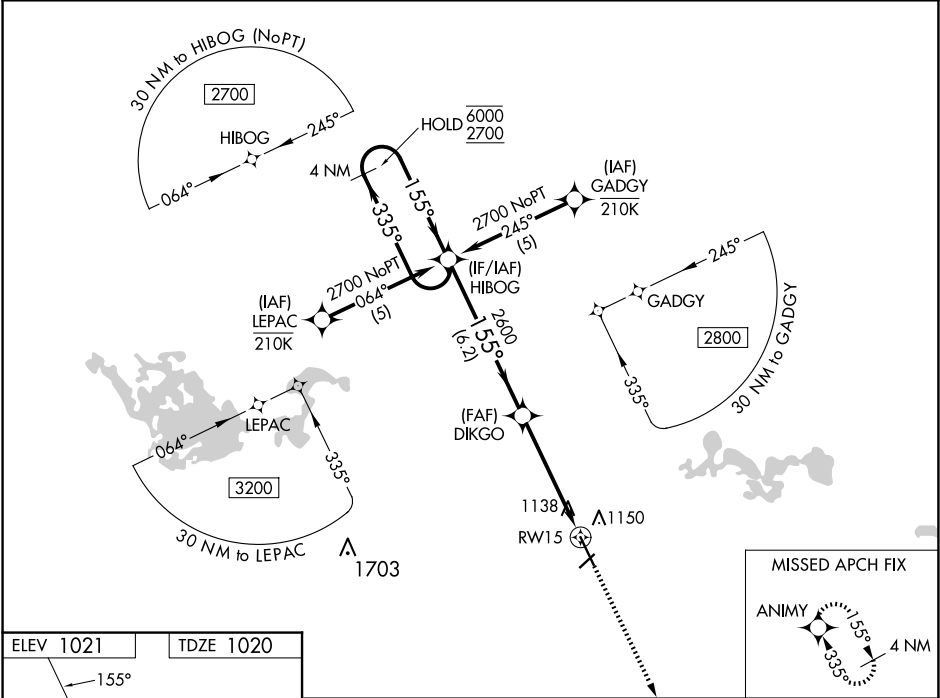
WAAS CH 45615 W15A	APP CRS 155°	Rwy ldg 6600 TDZE 1020 Apt Elev 1021
--	------------------------	--

RNAV (GPS) RWY 15

MANKATO RGNL (MKT)

RNP APCH - GPS.	MISSED APPROACH: Climb to 2900 direct ANIMY and hold.
▼ For uncompensated Baro-VNAV systems, LNAV/VNAV NA below -17°C or above 54°C. Rwy 15 helicopter visibility reduction below 1 SM NA.	

AWOS-3PT 118.175	MINNEAPOLIS CENTER 135.0 306.9	UNICOM 122.725 (CTAF) 0
----------------------------	--	-----------------------------------



<div><div>4 NM Holding Pattern</div><div>HIBOG</div><div>GP 3.00° TCH 48</div></div> <div><div>6000 2700</div><div>335° 155°</div><div>155°</div><div>2600</div><div>DIKGO</div><div>2600</div><div>1 NM to RW15</div><div>RW15</div><div>2900</div><div>ANIMY</div></div> <div><div>6.2 NM</div><div>3.8 NM</div><div>1 NM</div></div>				
CATEGORY	A	B	C	D
LPV DA	1270-1 250 (300-1)			
LNAV/VNAV DA	1299-1 279 (300-1)			
LNAV MDA	1400-1 380 (400-1)			
CIRCLING	1460-1 439 (500-1)	1480-1 459 (500-1)	1600-1½ 579 (600-1½)	1600-2 579 (600-2)