

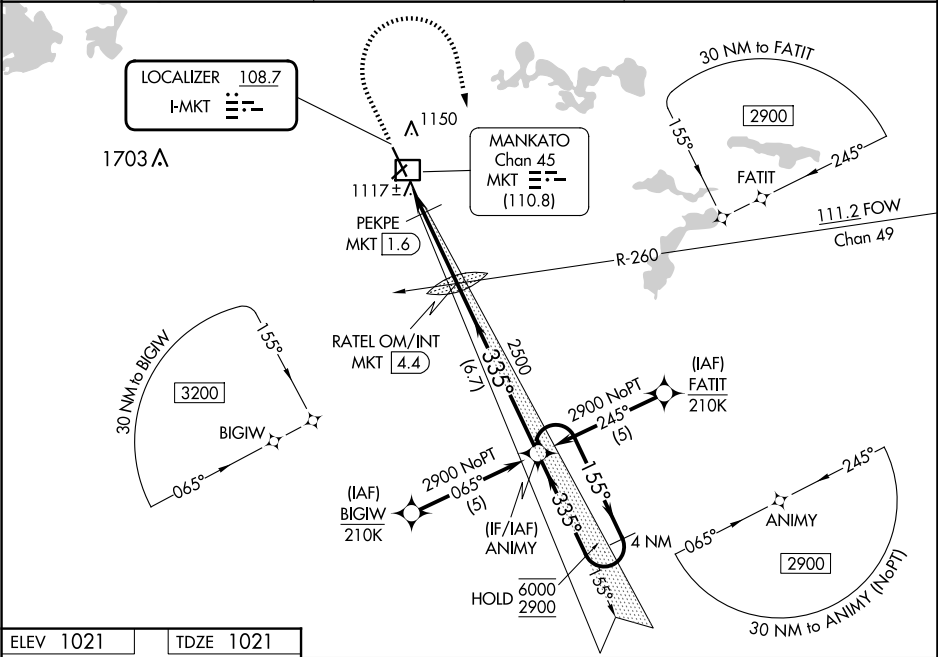
LOC I-MKT 108.7	APP CRS 335°	Rwy Idg 6600
		TDZE 1021
		Apt Elev 1021

ILS Y or LOC Y RWY 33

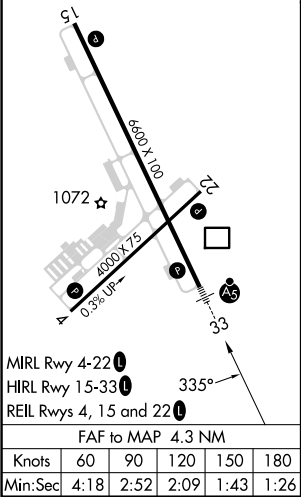
MANKATO RGNL (MKT)





RNP APCH - GPS.	MALSR	MISSED APPROACH: Climb to 1500 then climbing right turn to 2900 direct ANIMY and hold.
<div><div></div><div>*DME from MKT DME. DME use requires simultaneous reception of I-MKT and MKT DME. For inop ALS, increase PEKPE fix minimums S-LOC 33 Cats C/D visibility to 1 SM.</div></div>	<div><div></div><div></div></div>	

AWOS-3PT 118.175	MINNEAPOLIS CENTER 135.0 306.9	UNICOM 122.725 (CTAF) 0
---------------------	-----------------------------------	----------------------------



ELEV 1021	TDZE 1021
-----------	-----------



1500	2900	ANIMY				
						
			RATE OM/INT MKT 4.4	ANIMY		4 NM Holding Pattern
PEKPE MKT 1.6			2427	335°	155° → 6000 ← 335° 2900	
MKT 1.1			1480	2500	GS 3.00° TCH 48	
			1 NM	0.5	2.8 NM	6.7 NM
CATEGORY	A		B		C	D
S-ILS 33	1221-1/2 200 (200-1/2)					
S-LOC 33	1480-1/2 459 (500-1/2)		1480-7/8 459 (500-7/8)			
CIRCLING	1480-1 459 (500-1)		1600-1/2 579 (600-1/2)		1600-2 579 (600-2)	
PEKPE FIX MINIMUMS*						
S-LOC 33	1380-1/2 359 (400-1/2)		1380-5/8 359 (400-5/8)			
CIRCLING	1460-1 439 (500-1)		1480-1 459 (500-1)		1600-1/2 579 (600-1/2) 1600-2 579 (600-2)	