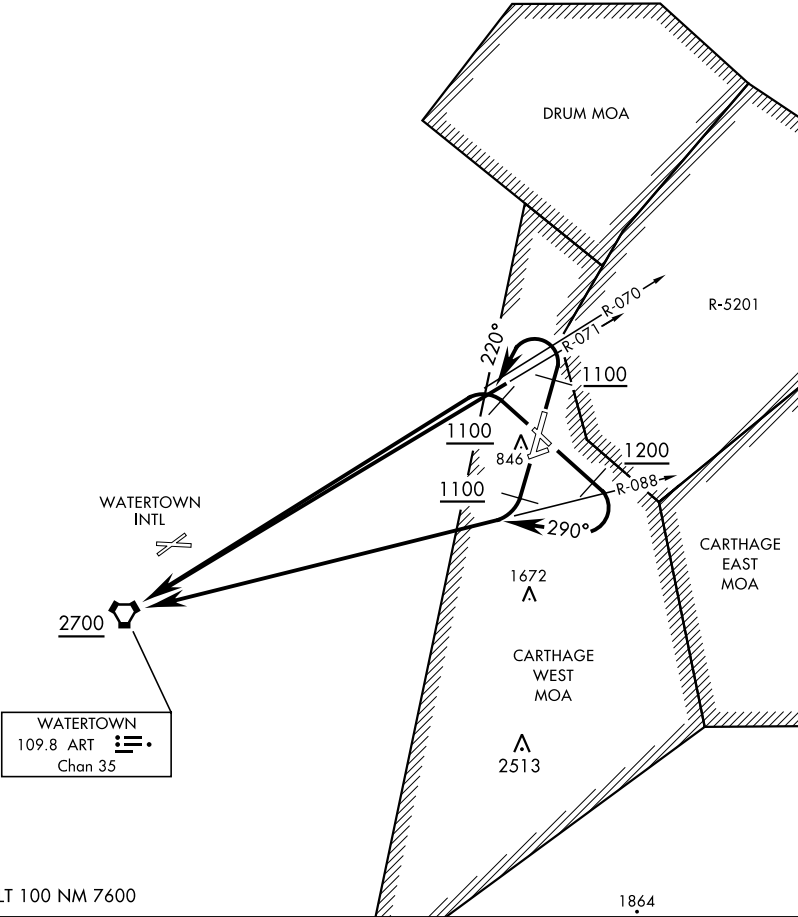


ATIS 119.525  
CLNC DEL  
123.65  
GND CON  
123.65 229.8  
TOWER  
118.75 290.25  
DEP CON  
124.875 307.125

[USA]



DEPARTURE ROUTE DESCRIPTION

TAKEOFF RWY 15: Climb via heading 147° to 1200, then climbing right turn to 2700 via heading 290° and ART R-088 to ART VORTAC, thence...

TAKEOFF RWY 21: Climb via heading 209° to 1100, then climbing right turn to 2700 via ART R-088 to ART VORTAC, thence...

TAKEOFF RWY 03: Climb via heading 029° to 1100, then climbing left turn to 2700 via heading 220° and ART R-071 to ART VORTAC, thence...

TAKEOFF RWY 33: Climb via heading 327° to 1100, then climbing left turn to 2700 via ART R-070 to ART VORTAC, thence...

...cross ART VORTAC at or above 2700 via assigned route.