

VORTAC MCB

116.7

Chan 114

APP CRS

233°

Rwy Idg

TDZE

Apt Elev

N/A

N/A

413

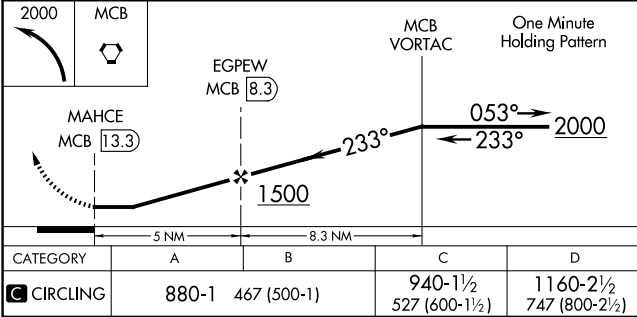
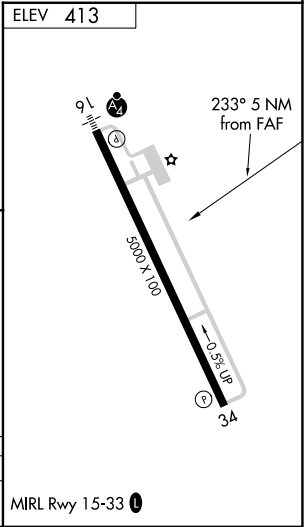
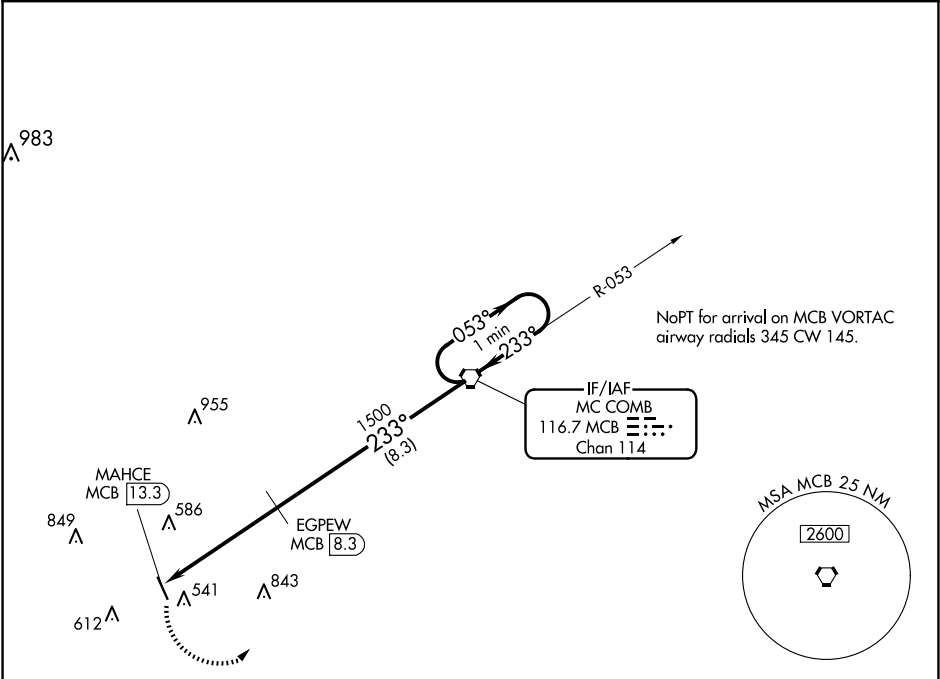
VOR/DME-A

MC COMB/PIKE COUNTY/JOHN E LEWIS FLD (MCB)

When local altimeter setting not received, use Natchez altimeter setting and increase MDA 140 feet and Cat C and D visibility ¼ mile.

MISSED APPROACH: Climbing left turn to 2000 direct MCB VORTAC and hold

ASOS	HOUSTON CENTER	UNICOM
119.025	126.8 327.8	123.05 (CTAF) 0



SC-4, 07 AUG 2025 to 04 SEP 2025

SC-4, 07 AUG 2025 to 04 SEP 2025