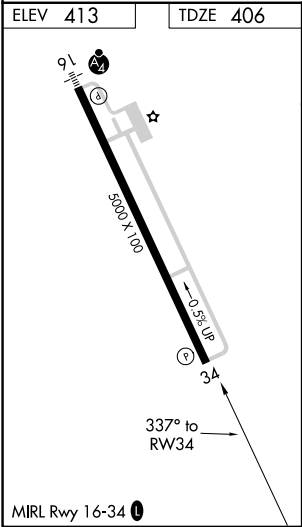
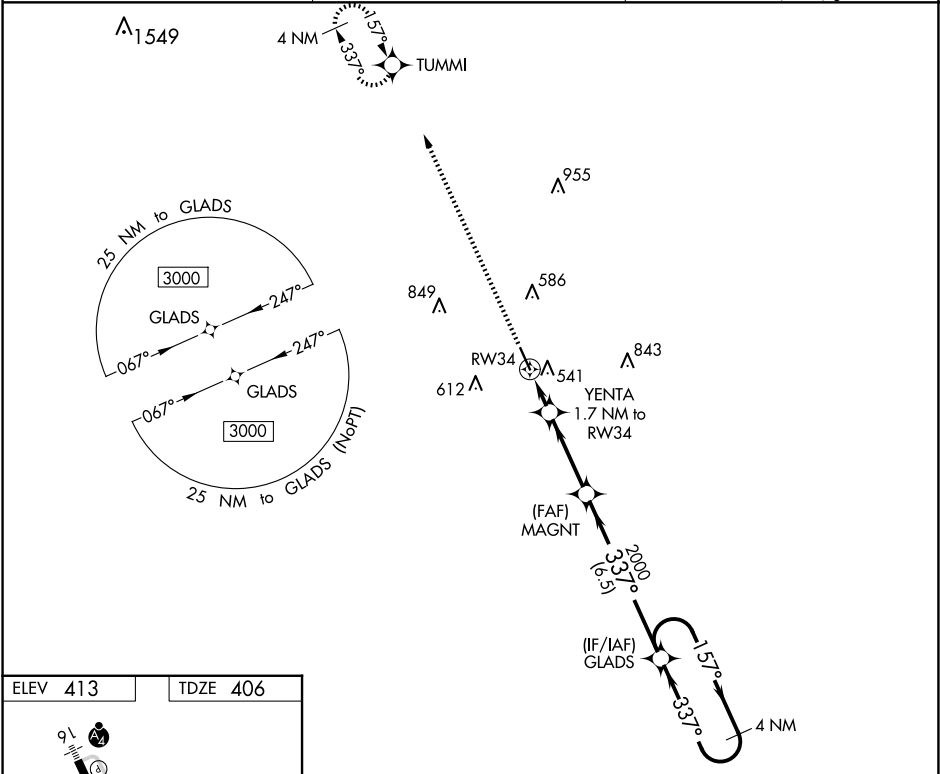


RNP APCH.

For uncompensated Baro-VNAV systems, LNAV/VNAV NA below -4°C (25°F)
or above 54°C (130°F).

MISSED APPROACH: Climb to 3000 direct TUMMI and hold.

ASOS 119.025	HOUSTON CENTER 126.8 327.8	UNICOM 123.05 (CTAF) 0
------------------------	--------------------------------------	----------------------------------



3000	TUMMI	VGSi and RNAV glidepath not coincident (VGSi Angle 3.00/TCH 40).		4 NM Holding Pattern
*LNAV only	YENTA 1.7 NM to RW34	MAGNT	2000	3000
	1.2 NM to RW34		980	2000
	1.2 NM	0.5	3.2 NM	6.5 NM
CATEGORY	A	B	C	D
LPV DA	606-3/4		200 (200-3/4)	
LNAV/VNAV DA	739-1		333 (400-1)	
LNAV MDA	800-1 394 (400-1)		800-1 1/8 394 (400-1 1/8)	
CIRCLING	880-1 467 (500-1)		940-1 1/2 527 (600-1 1/2) 1160-2 1/2 747 (800-2 1/2)	