

WAAS
CH **72824**
W16A

APP CRS
157°

Rwy Idg
TDZE
Apr Elev

5000
413
413

RNAV (GPS) RWY 16

MC COMB/PIKE COUNTY/JOHN E LEWIS FLD (MCB)

RNP APCH.

▼

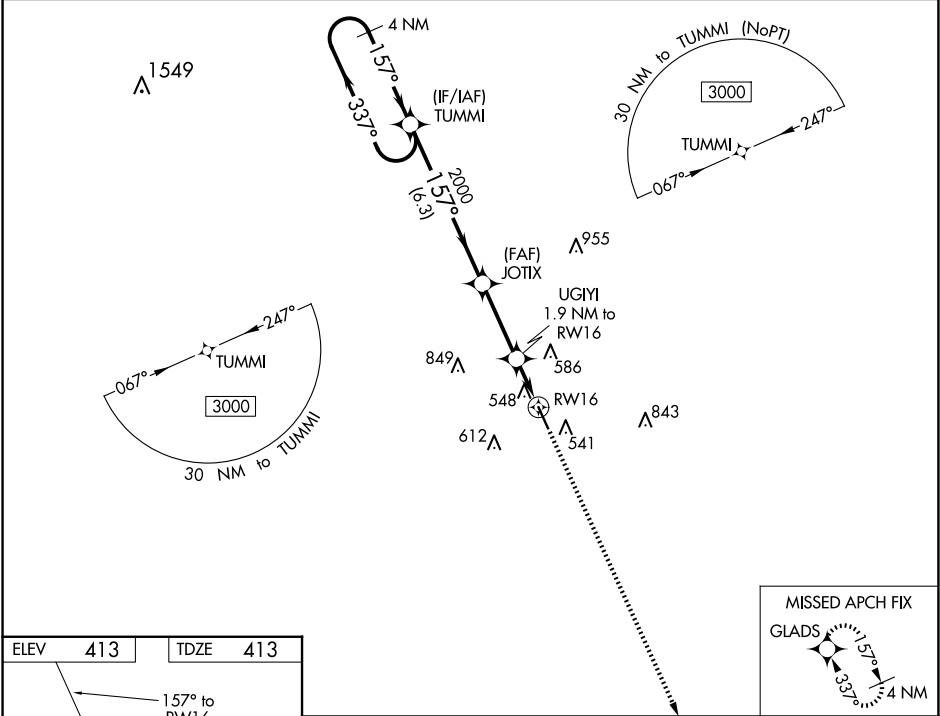
▲

For uncompensated Baro-VNAV systems, LNAV/VNAV NA below -4°C (25°F) or above 54°C (130°F). Inop table does not apply to LPV all Cats. For inop ALS, increase LNAV/VNAV all Cats visibility to 7/8 SM.

MALSF

MISSED APPROACH:
Climb to 3000 direct
GLADS and hold.

ASOS 119.025	HOUSTON CENTER 126.8 327.8	UNICOM 123.05 (CTAF) 0
------------------------	--------------------------------------	----------------------------------



ELEV 413

TDZE 413

157° to RW16

5000 x 100

0.3% Up

34

4 NM Holding Pattern

TUMMI

3000

337°

157°

GP 3.00°

TCH 42

6.3 NM

3 NM

0.8

1.1

1060

2000

157°

1.9 NM to RW16

*1.1 NM to RW16

RW16

3000

GLADS

*LNAV only.

CATEGORY	A	B	C	D
LPV DA		615-3/4	202 (300-3/4)	
LNAV/VNAV DA		709-3/4	296 (300-3/4)	
LNAV MDA	800-3/4	387 (400-3/4)	800-7/8	387 (400-7/8)
CIRCLING	880-1	467 (500-1)	940-1 1/2 527 (600-1 1/2)	1160-2 1/2 747 (800-2 1/2)