

WAAS CH <b>61016</b> <b>W23A</b>	APP CRS <b>229°</b>	Rwy Idg <b>6002</b> TDZE <b>101</b> Apt Elev <b>101</b>
--	------------------------	---

# RNAV (GPS) RWY 23

## LOWCOUNTRY RGNL (RBW)

**⚠** For uncompensated Baro-VNAV systems, LNAV/VNAV NA below -15°C (5°F) or above 54°C (130°F). Baro-VNAV and VDP NA when using Charleson AFB/Intl altimeter setting. DME/DME RNP-0.3 NA. Helicopter visibility reduction below ¾ SM NA. For inop ODALS, increase LNAV/VNAV all Cats visibility to 1¼ mile and LNAV Cat D visibility to 1¾ mile. When local altimeter setting not received, use Charleson AFB/Intl altimeter setting: increase LPV DA to 379 feet and LNAV/VNAV DA to 542 feet and all MDA 80 feet; increase LNAV/VNAV visibility all Cats, LNAV Cats C/D visibility, and Circling Cat D visibility ¼ mile; increase Circling Cat C visibility ½ mile. For inop ODALS when using Charleson AFB/Intl altimeter setting, increase LPV all Cats visibility to ¾ mile and LNAV/VNAV all Cats and LNAV Cats C/D visibility to 1½ mile.

ODALS

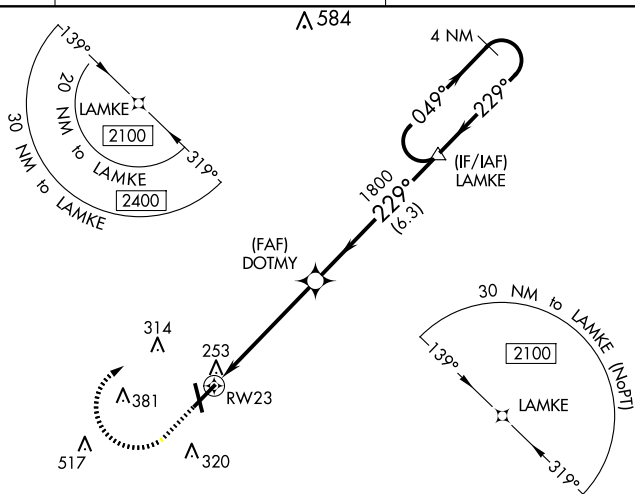


**MISSED APPROACH:** Climb to 1200 then climbing right turn to 2100 direct LAMKE and hold.

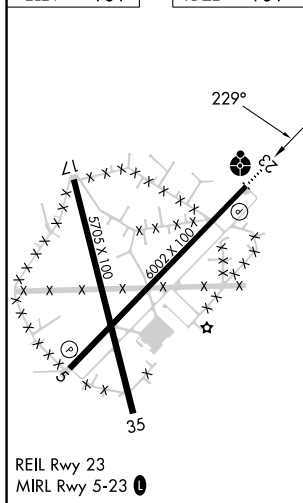
AWOS-3PT  
118.725

CHARLESTON APP CON  
120.7 306.925

UNICOM  
122.8 (CTAF) **L**



ELEV	101		TDZE	101
------	-----	--	------	-----



REIL Rwy 23  
MIRL Rwy 5-23 **L**

CATEGORY	A	B	C	D
LPV DA	301- $\frac{3}{4}$	200 (200- $\frac{3}{4}$ )		
LNNAV/ VNAV DA	464-1 $\frac{1}{8}$	363 (400-1 $\frac{1}{8}$ )		
LNNAV MDA	560- $\frac{3}{4}$	459 (500- $\frac{3}{4}$ )	560-1 $\frac{1}{8}$	459 (500-1 $\frac{1}{8}$ )
<b>C</b> CIRCLING	620-1 519 (600-1)	640-1 539 (600-1)	700-1 $\frac{1}{2}$ 599 (600-1 $\frac{1}{2}$ )	700-2 599 (600-2)