

WAAS CH 93616 W17A	APP CRS 171°	Rwy Idg TDZE 93 Apt Elev 101
--	------------------------	--

RNAV (GPS) RWY 17

LOWCOUNTRY RGNL (R.B.W)

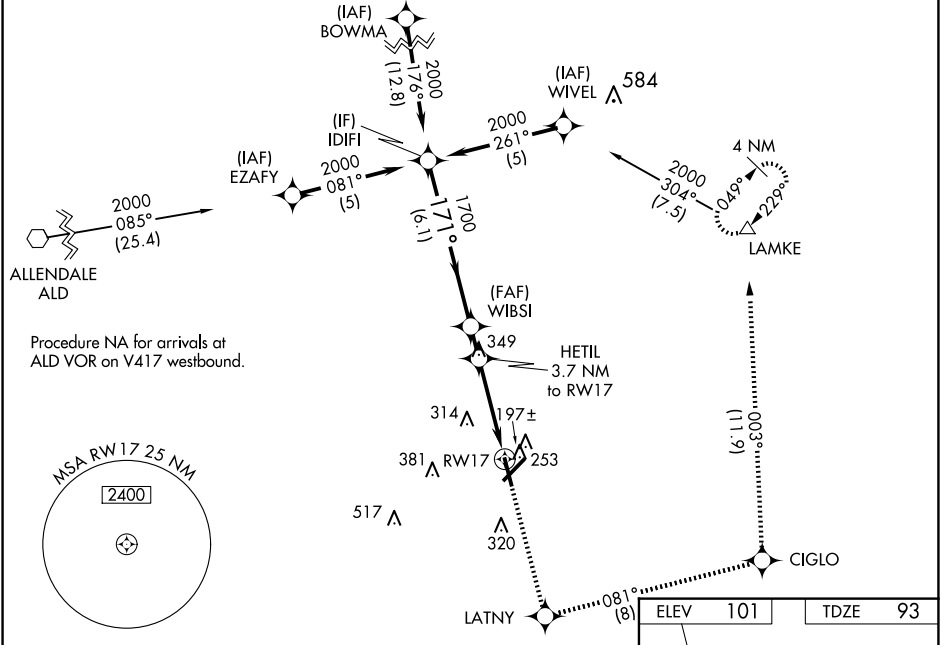
▼

⚠

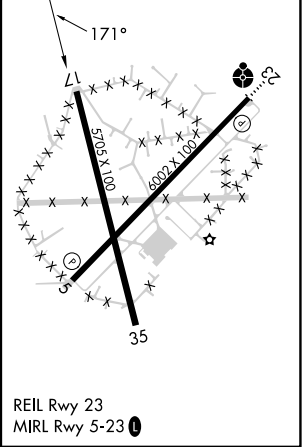
For uncompensated Baro-VNAV systems, LNAV/VNAV NA below -15°C (5°F) or above 54°C (130°F). Baro-VNAV and VDP NA when using Charleston Intl/AFB altimeter setting. DME/DME RNP-0.3 NA. When local altimeter setting not received, use Charleston AFB/Intl altimeter setting: increase LPV DA to 421 feet and LNAV/VNAV DA to 587 feet and all MDA 80 feet; increase LPV visibility all Cats ½ mile; increase LNAV/VNAV visibility all Cats, LNAV Cats C/D, and Circling Cat D visibility ¼ mile; increase Circling Cat C visibility ½ mile.

MISSED APPROACH:
Climb to 2100 direct LATNY and on track 081° to CIGLO and track 003° to LAMKE and hold.

AWOS-3PT 118.725	CHARLESTON APP CON 120.7 306.925	UNICOM 122.8 (CTAF) 0
----------------------------	--	---------------------------------



	IDIFI	WBSI	HETIL	CIGLO	LAMKE
	2100	1700	3.7 NM to RW17	tr 081°	tr 003°
	GP 3.00° TCH 40	1700	1.4 NM to RW17		
	2000	1700	1300		
	171°	171°			
	6.1 NM	1.2 NM	2.3 NM	1.4 NM	
CATEGORY	A	B	C	D	
LPV DA		343-1	250 (300-1)		
LNAV/VNAV DA		508-1½	415 (500-1½)		
LNAV MDA	580-1	487 (500-1)	580-1¾	487 (500-1¾)	
CIRCLING	620-1 519 (600-1)	640-1 539 (600-1)	700-1½ 599 (600-1½)	700-2 599 (600-2)	



SE-2, 07 AUG 2025 to 04 SEP 2025

SE-2, 07 AUG 2025 to 04 SEP 2025