

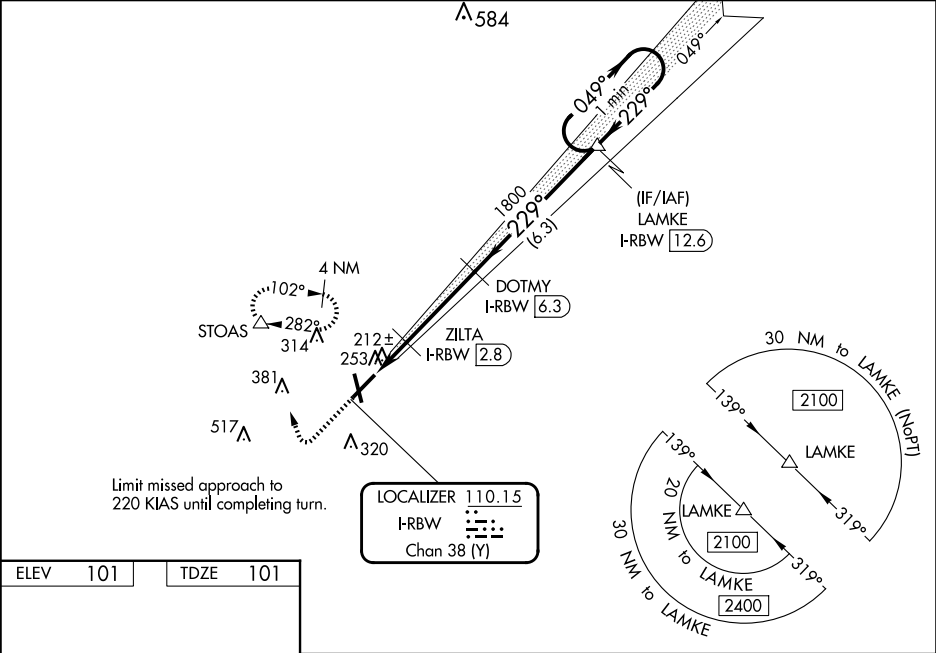
LOC/DME I-RBW 110.15 Chan 38 (Y)	APP CRS 229°	Rwy Idg 6002 TDZE 101 Apt Elev 101	ILS Z or LOC Z RWY 23 LOWCOUNTRY RGNL (R.BW)
--	------------------------	---	---

⚠ Inop table does not apply to S-LOC 23 Cat C. GPS and DME required. Helicopter visibility reduction below ¾ SM NA. VDP NA with Charleston AFB/Intl altimeter setting. When local altimeter setting not received, use Charleston AFB/Intl altimeter setting: increase S-ILS 23 DA to 379 feet and all MDA 80 feet; increase S-LOC 23 Cats C/D visibility ½ mile and Circling Cat C visibility ½ mile and Circling Cat D visibility ¼ mile. For inop ODALS when using Charleston AFB/Intl altimeter setting, increase S-ILS 23 all Cats visibility to ¾ mile and S-LOC 23 Cat D visibility to 1 ¾ mile.

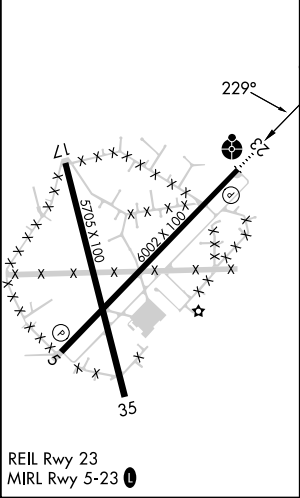
ODALS

MISSED APPROACH: Climb to 1500 then climbing right turn to 2000 direct STOAS and hold.

AWOS-3PT 118.725	CHARLESTON APP CON 120.7 306.925	UNICOM 122.8 (CTAF)
----------------------------	--	-------------------------------



ELEV	101	TDZE	101
------	-----	------	-----



REIL Rwy 23
MIRL Rwy 5-23

1500 2000 STOAS		VGSI and ILS glidepath not coincident (VGSI Angle 3.00/TCH 46).		One Minute Holding Pattern	
*LOC only.		LAMKE I-RBW [12.6]		2100	
*I-RBW [1.1]		ZILTA I-RBW [2.8]		1800	
I-RBW [2.2]		DOTMY I-RBW [6.3]		680	
1 NM		0.7		3.5 NM	
CATEGORY		A		B	
S-ILS 23		301-¾		200 (200-¾)	
S-LOC 23		480-¾		379 (400-¾)	
CIRCLING		620-1		640-1	
		519 (600-1)		599 (600-1½)	
		539 (600-1)		700-2	
		599 (600-1½)		599 (600-2)	

SE-2, 07 AUG 2025 to 04 SEP 2025

SE-2, 07 AUG 2025 to 04 SEP 2025