

LOC/DME I-RBW <u>110.15</u> Chan 38 (Y)	APP CRS 229°	Rwy Idg 6002 TDZE 101 Apt Elev 101
---	------------------------	---

ILS Y or LOC Y RWY 23
LOWCOUNTRY RGNL (RBW)

DME required.



Rwy 23 helicopter visibility reduction below $\frac{3}{4}$ SM NA.
Inop table does not apply to S-LOC 23 all Cats.

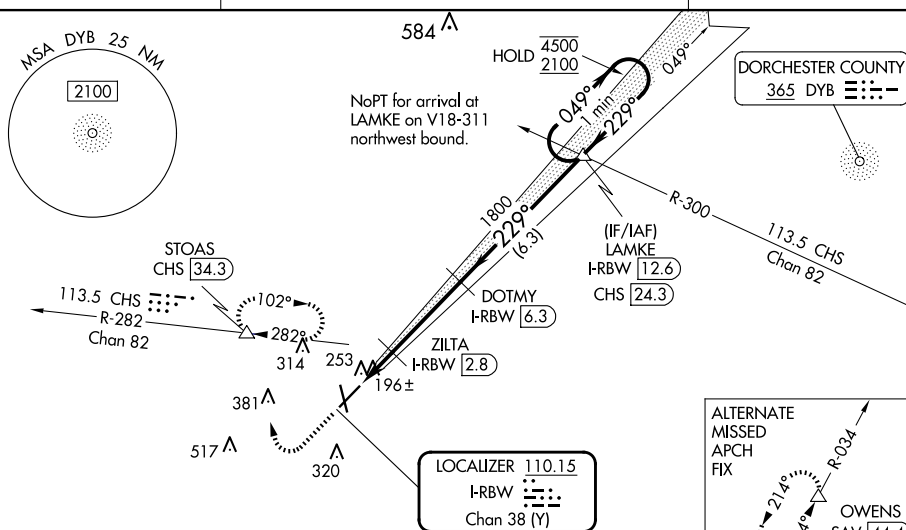
ODALS



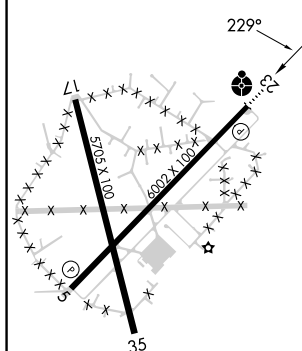
MISSED APPROACH: Climb to 700 then climbing right turn to 2000 on heading 360° and CHS VORTAC R-282 to STOAS/CHS VORTAC 34.3 DME and hold, continue climb-in-hold to 2000, or as directed by ATC.

AWOS-3PT
118.725

CHARLESTON APP CON
120.7 306,925

UNICOM
122.8 (CTAF) **L**

ELEV 101	TDZE 101
REIL Rwy 23	
MIRL Rwy 5-23 L	

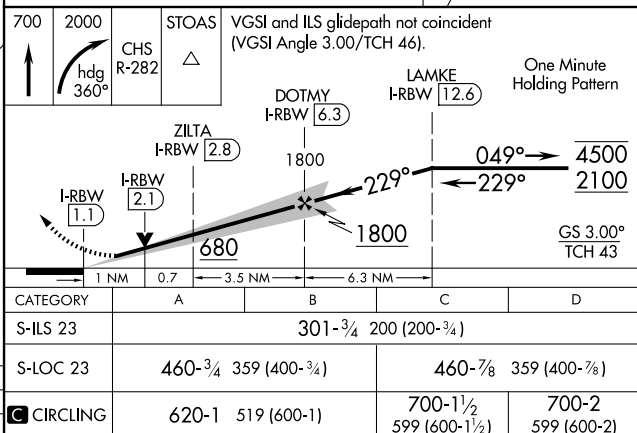


FAF to MAP 5.2 NM

Knots	60	90	120	150	180
Min:Sec	5:12	3:28	2:36	2:05	1:44

WALTERBORO, SOUTH CAROLINA

Amdt 3 30NOV23



LOWCOUNTRY RGNL (RBW)

ILS Y or LOC Y RWY 23

SE-2, 07 AUG 2025 to 04 SEP 2025