

WAAS CH <b>50420</b> <b>W30A</b>	APP CRS <b>297°</b>	Rwy Idg TDZE Apt Elev	<b>3428</b> <b>939</b> <b>940</b>
--	------------------------	-----------------------------	---

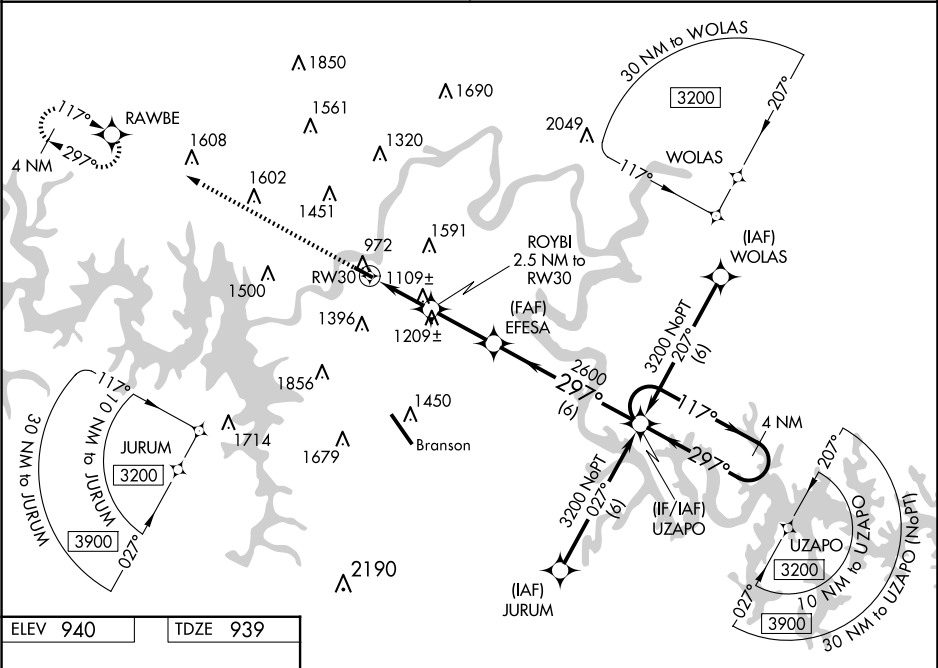
RNAV (GPS) RWY 30

M GRAHAM CLARK DOWNTOWN (PLK)

Baro-VNAV NA when using Branson altimeter setting. For uncompensated Baro-VNAV systems, LNAV/VNAV NA below -16°C (4°F) or above 54°C (130°F). DME/DME RNP-0.3 NA. VDP NA with KBBG altimeter setting. Obtain local altimeter setting on CTAF; when not received, use Branson altimeter setting and increase all DA 65 feet and all MDA 80 feet; increase LPV and LNAV/VNAV all Cats visibility ½ mile.

MISSED APPROACH:  
Climb to 3200 direct  
RAWBE and hold.

SPRINGFIELD APP CON <b>126.35</b>	UNICOM <b>122.7 (CTAF) 0</b>
--------------------------------------	---------------------------------



ELEV 940

TDZE 939

3200

RAWBE

3738 X 100

297° to RW30

REIL Rwy 12 and 30 0

MIRL Rwy 12-30 0

<div><div>3200</div><div>RAWBE</div></div> <div>4 NM Holding Pattern</div> <div><div>*LNAV only</div><div>ROYBI 2.5 NM to RW30</div><div>EFESA 2600</div><div>UZAPO</div><div>117°</div><div>297°</div><div>3200</div><div>GP 3.00°</div><div>TCH 52</div></div>				
CATEGORY	A	B	C	D
LPV DA	1189-¾	250 (300-¾)		NA
LNAV/VNAV DA	1224-⅞	285 (300-⅞)		NA
LNAV MDA	1360-1	421 (500-1)		NA
CIRCLING	1560-1	620 (700-1)		NA