

WAAS CH <b>78220</b> <b>W12A</b>	APP CRS <b>117°</b>	Rwy Idg TDZE Apt Elev	<b>3449</b> <b>940</b> <b>940</b>
--	------------------------	-----------------------------	---

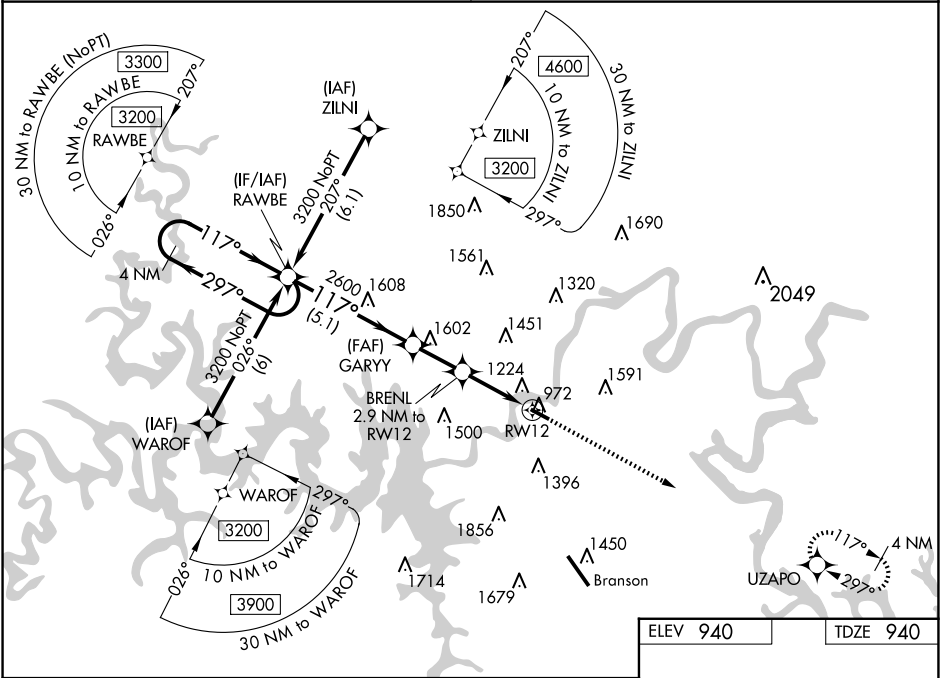
RNAV (GPS) RWY 12

M GRAHAM CLARK DOWNTOWN (PLK)

Baro-VNAV NA when using Branson altimeter setting. For uncompensated Baro-VNAV systems, LNAV/VNAV NA below -16°C (4°F) or above 54°C (130°F). DME/DME RNP-0.3 NA. VDP NA with Branson altimeter setting. Obtain local altimeter setting on CTAF; when not received, use Branson altimeter setting and increase all DA 65 feet and all MDA 80 feet; increase LPV all Cats visibility ½ mile and LNAV/VNAV all Cats visibility ¼ mile.

MISSED APPROACH:  
Climb to 3200 direct UZAPO and hold.

SPRINGFIELD APP CON <b>126.35</b>	UNICOM <b>122.7 (CTAF) 0</b>
--------------------------------------	---------------------------------



4 NM Holding Pattern RAWBE

3200 ← 297°  
117° →

GP 3.10°  
TCH 40

\*LNAV only

3200 UZAPO

117° to RW12

GARYY 2600

BRENL 2.9 NM to RW12

\*1.7 NM to RW12

RW12

5.1 NM

2 NM

1.2

1.7 NM

CATEGORY	A	B	C	D
LPV DA	1140-¾	200 (200-¾)		NA
LNAV/VNAV DA	1416-1⅝	476 (500-1⅝)		NA
LNAV MDA	1540-1	600 (600-1)		NA
CIRCLING	1560-1	620 (700-1)		NA

REIL Rwys 12 and 30 0

MIRL Rwy 12-30 0