

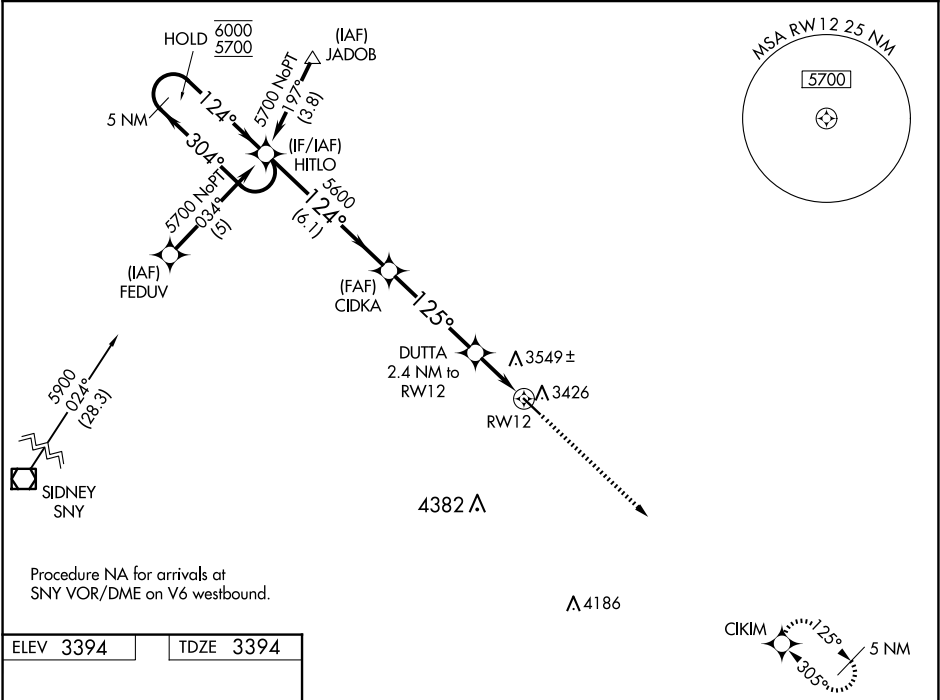
WAAS CH 99708 W12A	APP CRS 125°	Rwy Idg 4699 TDZE 3394 Apt Elev 3394
--	------------------------	---

RNAV (GPS) RWY 12

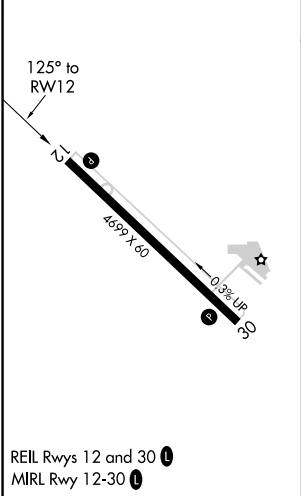
GARDEN COUNTY/KING RHILEY FLD (OKS)

RNP APCH.	MISSED APPROACH: Climb to 5400 direct CIKIM and hold.
<div><div>Baro-VNAV NA. Rwy 12 helicopter visibility reduction below ¾ SM NA. Use Ogallala altimeter setting.</div><div>NA</div></div>	

OGA AWOS-3 121.275	DENVER CENTER 118.475 225.4	UNICOM 122.8 (CTAF) 0
------------------------------	---------------------------------------	---------------------------------



ELEV 3394	TDZE 3394
-----------	-----------



5 NM Holding Pattern HITLO				5400	CIKIM
6000 ← 304° 5700 124° →				* LNAV only	
GP 3.00° TCH 40					
CIDKA 5600 DUTTA 2.4 NM to RW12 RW12					
6.1 NM 4.3 NM 2.4 NM					
CATEGORY	A	B	C	D	
LPV DA	3762-1¼	368 (400-1¼)	NA		
LNAV/VNAV DA	3882-1¾	488 (500-1¾)	NA		
LNAV MDA	3980-1	586 (600-1)	NA		
CIRCLING	3980-1 586 (600-1)	4180-1 786 (800-1)	NA		