

LOC/DME I-HWY
109.75
Chan **34** (Y)

APP CRS
149°

Rwy Idg
TDZE **327**
Apt Elev **336**

LOC/DME RWY 15

WARRENTON/FAUQUIER (HWY)

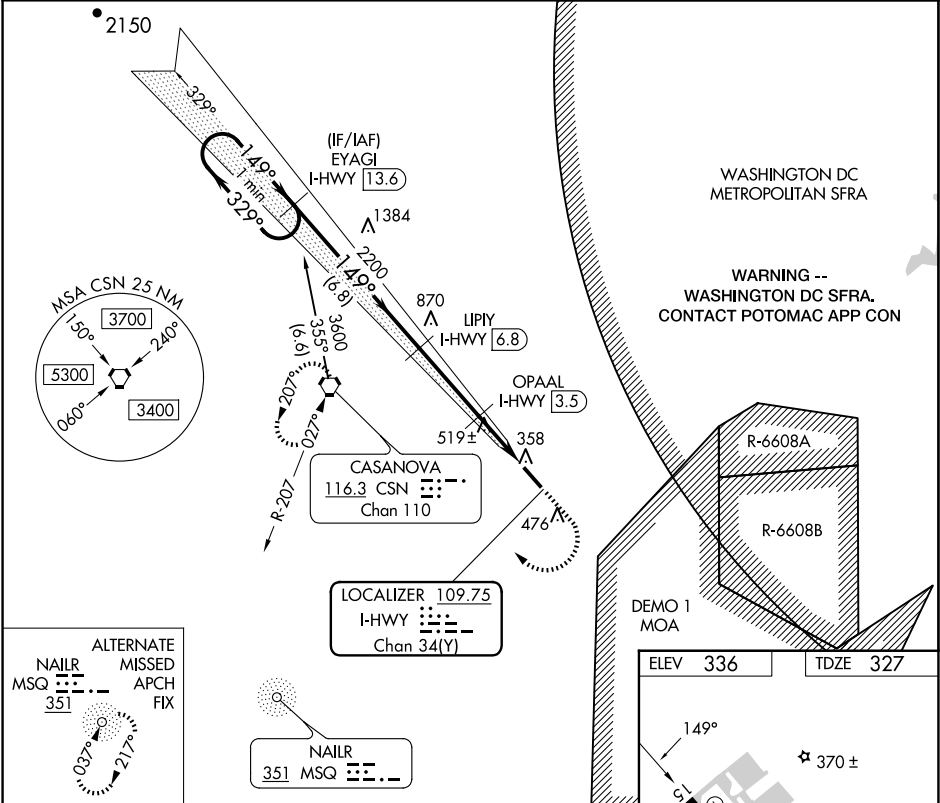
▼

NA

Helicopter visibility reduction below ¾ SM NA. VDP NA with Culpeper altimeter setting. When local altimeter setting not received, use Culpeper altimeter setting and increase all MDAs 40 feet and Circling Cat D visibility ¼ SM.

MISSED APPROACH: Climb to 1200 then climbing right turn to 3000 direct CSN VORTAC and hold.

AWOS-3 120.35	CJR AWOS-3 119.325	POTOMAC APP CON 128.525 306.925	UNICOM 122.7 (CTAF) 0
-------------------------	------------------------------	---	---------------------------------



One Minute Holding Pattern

EYAGI I-HWY 13.6

LIPIY I-HWY 6.8

OPAAAL I-HWY 3.5

I-HWY 2.3

I-HWY 1

3600

329°

149°

149°

2200

1160

3.00°

TCH 53

6.8 NM

3.3 NM

1.2 NM

1.3

CATEGORY	A	B	C	D
S-15	780-1	453 (500-1)	780-1⅓	453 (500-1⅓)
CIRCLING	780-1 444 (500-1)	800-1 464 (500-1)	880-1½ 544 (600-1½)	980-2 644 (700-2)

ELEV 336

TDZE 327

149°

370 ±

0.5% Up

5000 X 100

REIL Rwy 15 and 33
HIRL Rwy 15-33 0