

VOR/DME AIR	APP CRS	Rwy Idg	3805
<b>117.1</b>	<b>229°</b>	TDZE	<b>1197</b>
Chan <b>118</b>		Apt Elev	<b>1197</b>

VOR/DME RWY 25

MONROE COUNTY (4G5)

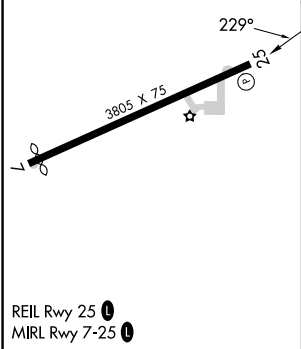
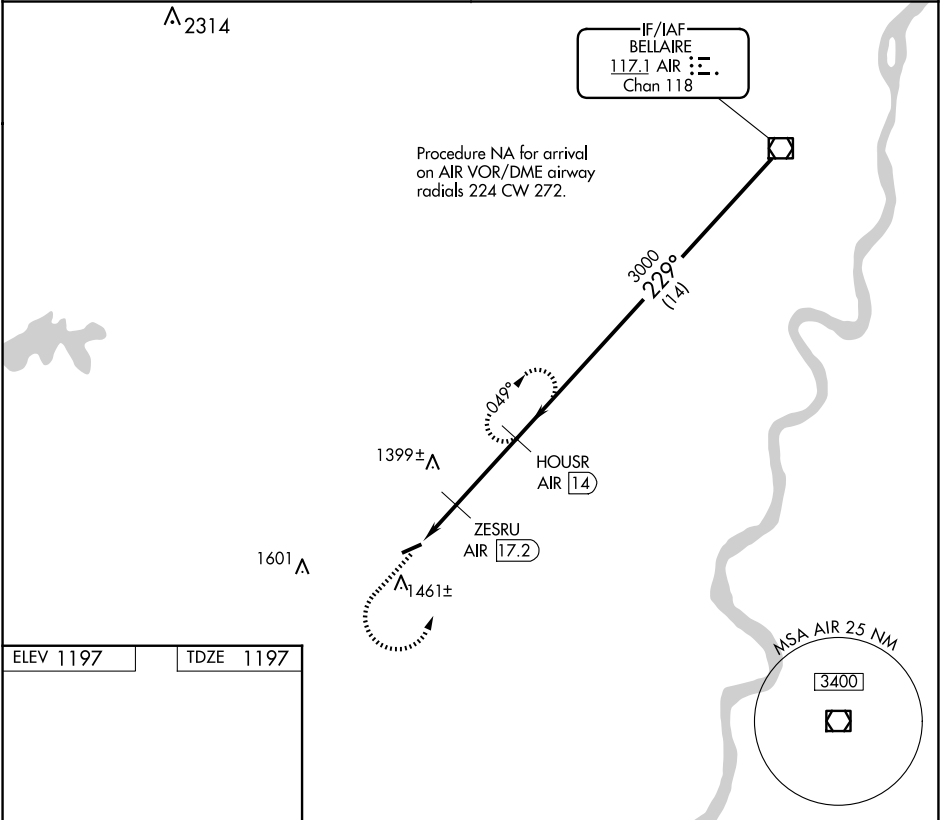
▼

NA

Use Wheeling Ohio Co, WV alimeter setting; when not received use Parkersburg, WV alimeter setting and increase all MDA 60 feet; increase S-25 Cat C visibility ⅜ mile and Circling Cat C visibility ¼ mile. Procedure NA at night. Rwy 25 helicopter visibility reduction below 1 SM NA.

MISSED APPROACH: Climb to 3000 then left turn on AIR VOR/DME R-229 to HOUSR/AIR 14 DME and hold.

CLEVELAND CENTER <b>126.95 239.3</b>	UNICOM <b>122.8 (CTAF) 0</b>
-----------------------------------------	---------------------------------



3000	AIR R-229	HOUSR AIR 14	VGSI and descent angles not coincident (VGSI Angle 3.00/TCH 40).	
		HOUSR AIR 14	AIR VOR/DME	
	ZESRU AIR 19.1	ZESRU AIR 17.2		
	3.35° TCH 40	229°	3000	3000
	1.9 NM	3.2 NM	1.4 NM	
CATEGORY	A	B	C	D
S-25	1740-1	543 (600-1)	1740-1½ 543 (600-1½)	NA
CIRCLING	1860-1	663 (700-1)	1860-1¼ 663 (700-1¼)	NA

EC-2, 07 AUG 2025 to 04 SEP 2025

EC-2, 07 AUG 2025 to 04 SEP 2025