

MONTICELLO, IOWA

AL-5745 (FAA)

23334

WAAS CH 82222 W33A	APP CRS 333°	Rwy Idg TDZE Apt Elev	4400 830 833
--	------------------------	-----------------------------	---

RNAV (GPS) RWY 33
MONTICELLO RGNL (MXO)

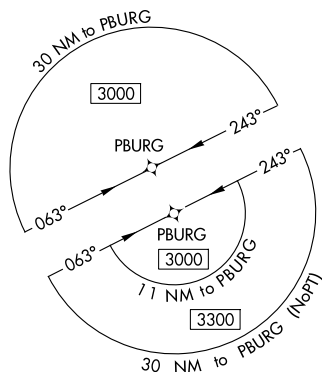
RNP APCH - GPS.

T Circling NA to Rwy 9 and 27. Circling Rwy 15 NA at night. VDP NA when
A using Dubuque altimeter setting. Rwy 33 helicopter visibility reduction
below $\frac{3}{4}$ SM NA. When local altimeter setting not received, use Dubuque
altimeter setting and increase all MDAs 100 feet; increase LP Cat C, LNAV
Cat C and Circling Cat C visibility $\frac{1}{4}$ SM.

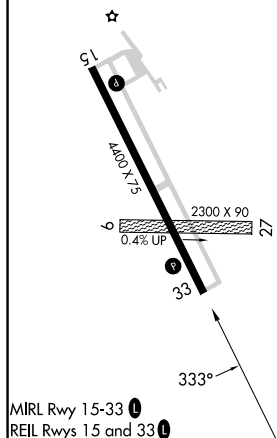
MISSED APPROACH: Climb to 3000 direct
OREVY and hold.

AWOS-3 119.275	CEDAR RAPIDS APP CON * 134.05 266.8	UNICOM 122.8 (CTAF) 0
--------------------------	---	---------------------------------

MISSED APCH FIX

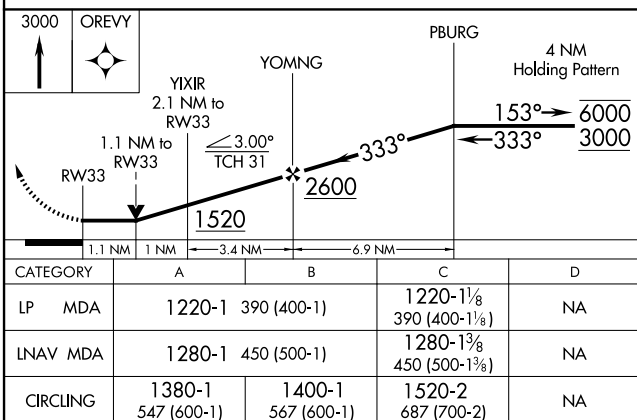
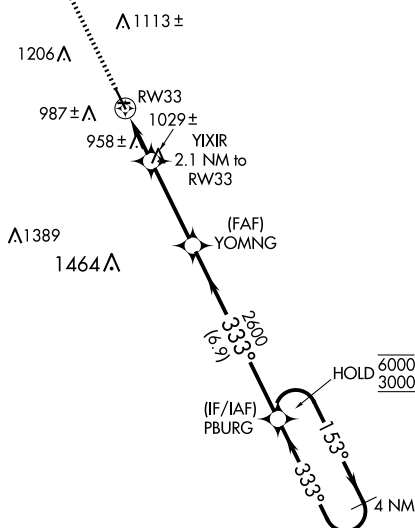


ELEV 833		TDZE 830
----------	--	----------



MONTICELLO, IOWA

Amdt 1C 30NOV23



MONTICELLO RGNL (MX0)

RNAV (GPS) RWY 33

NC-3, 07 AUG 2025 to 04 SEP 2025

NC-3, 07 AUG 2025 to 04 SEP 2025

42°13'N-91°10'W