

WAAS CH <b>58035</b> <b>W09A</b>	APP CRS <b>095°</b>	Rwy Idg <b>10499</b> TDZE <b>13</b> Apt Elev <b>13</b>
--	------------------------	--

RNAV (GPS) RWY 9

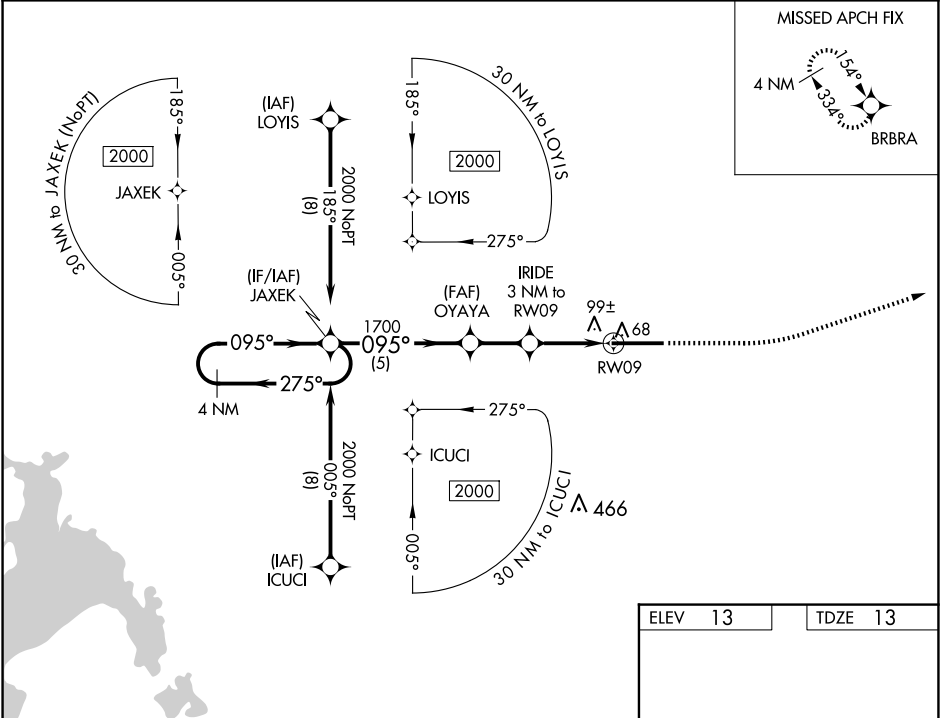
DADE-COLLIER TRAINING AND TRANSITION (TNT)

**NA**

Baro-VNAV NA when using Miami Executive altimeter setting. For uncompensated Baro-VNAV systems, LNAV/VNAV NA below -15°C (5°F) or above 54°C (130°F). Rwy 9 helicopter visibility reduction below 1 SM NA. DME/DME RNP-0,3 NA. Procedure NA at night. When local altimeter setting not received, use Miami Executive altimeter setting and increase LPV DA to 279 feet; increase LNAV/VNAV DA to 346; and increase all MDA 80 feet; increase LNAV Cats C and D visibility ¼ SM.

MISSED APPROACH: Climb to 1000 then climbing left turn to 2000 direct BRBRA and hold.

AWOS-3 <b>119.075</b>	MIAMI APP CON <b>128.6 306.975</b>	UNICOM <b>123.0</b> (CTAF)
--------------------------	---------------------------------------	-------------------------------



4 NM Holding Pattern

JAXEK

OYAYA

IRIDE 3 NM to RWY 9

RWY 9

GP 3.00° TCH 55

1000 2000 BRBRA

\*LNAV only.

10499 X 150

CATEGORY	A	B	C	D
LPV DA		213-1	200 (200-1)	
LNAV/VNAV DA		280-1	267 (300-1)	
LNAV MDA		360-1	347 (400-1)	
CIRCLING	400-1 387 (400-1)	480-1 467 (500-1)	480-1½ 467 (500-1½)	580-2 567 (600-2)

HIRL Rwy 9-27

RNAV (GPS) RWY 9

SE-3, 07 AUG 2025 to 04 SEP 2025

SE-3, 07 AUG 2025 to 04 SEP 2025