

VORTAC TYI	APP CRS	Rwy Idg	6900
117.8	238°	TDZE	152
Chan 125		Apt Elev	158

VOR RWY 22

ROCKY MOUNT/WILSON RGNL (RWI)

DME required.

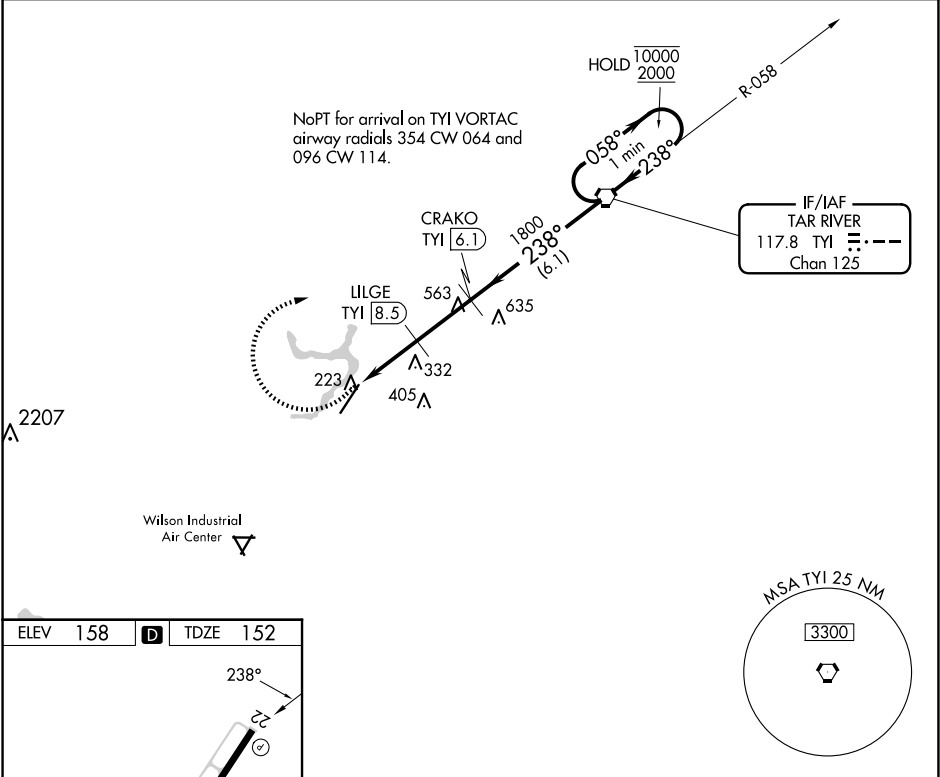
▼

▲

Rwy 22 helicopter visibility reduction below 1 SM NA. When local altimeter setting not received, use Wayne Exec Jetport altimeter setting and increase all MDAs 60 feet and S-22 Cat C/D 1/8 SM and Circling Cat C visibility 1/4 SM. Straight-in Rwy 22 NA at night, Circling Rwy 4, 22 NA at night.

MISSED APPROACH: Climb to 1100 then climbing right turn to 2000 direct TYI VORTAC and hold.

ASOS 118.875	WASHINGTON CENTER 123.85 279.65	UNICOM 123.05 (CTAF) 0
-----------------	------------------------------------	---------------------------



1100

2000

TYI

VGSI and descent angles not coincident (VGSI Angle 3.00/TCH 42).

One Minute Holding Pattern

CRAKO TYI 6.1

TYI VORTAC

LILGE TYI 8.5

3.01°

TCH 41

TYI 11.1

1020

1800

238°

238°

058°

10000

2000

2.6 NM

2.4 NM

6.1 NM

CATEGORY	A		B		C	D
S-22	600-1 448 (500-1)		600-1 1/4 448 (500-1 1/4)			
CIRCLING	600-1 442 (500-1)	620-1 462 (500-1)	720-1 1/2 562 (600-1 1/2)	760-2 602 (700-2)		

REIL Rwy 22

HIRL Rwy 4-22

1

0