

WAAS CH 56513 W04A	APP CRS 042°	Rwy Idg TDZE Apt Elev	7099 158 158
--	------------------------	-----------------------------	---

RNAV (GPS) RWY 4

ROCKY MOUNT/WILSON RGNL (RWI)

⚠ Inop table does not apply to LPV when using local altimeter setting. For uncompensated Baro-VNAV systems, LNAV/VNAV NA below -10°C (14°F) or above 54°C (130°F). When local altimeter setting not received, use Wayne Exec Jport altimeter setting and increase LPV DA to 467; increase LNAV/VNAV DA to 601 and all Cots visibility ¼ mile; increase all MDA 60 feet and LNAV Cots C/D and Circling Cat C visibility ¼ mile. For inop MALSR, increase LNAV Cat A/B visibility to 1 mile. DME/DME RNP-0.3 NA. Baro-VNAV and VDP NA when using Wayne Exec Jport altimeter setting.

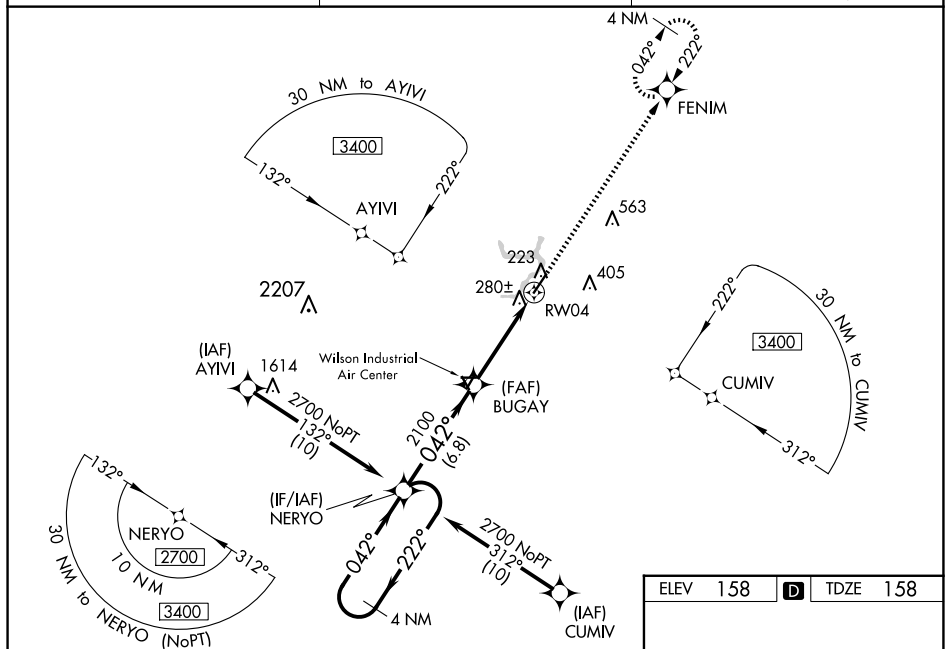
⚠ Rwy 4 helicopter visibility reduction below ¼ SM NA.

MALSR



MISSED APPROACH:
Climb to 2500 direct
FENIM and hold.

ASOS 118.875	WASHINGTON CENTER 123.85 279.65	UNICOM 123.05 (CTAF) 0
------------------------	---	----------------------------------



SE-2, 07 AUG 2025 to 04 SEP 2025

The diagram illustrates the layout of runway 22, which is 7099 feet long by 130 feet wide. The runway is oriented at 042° to RW04. Key features include:

- ELEV 158** and **TDZE 158** at the top.
- 218** (star) and **22** (circle) at the top left.
- 7099 X 130** indicating the runway dimensions.
- A5** (circle) and **22** (circle) at the bottom left.
- 042° to RW04** indicating the runway orientation.
- REIL Rwy 22** and **HIRL Rwy 4-22** at the bottom right.

4 NM Holding Pattern

VGSI and RNAV glidepath not coincident (VGSI Angle 3.00/TCH 41).

2700 ← 222°
042° →

NERYO

BUGAY

2100

2100

*1.1 NM to RW04

RW04

GP 3.00°
TCH 56

6.8 NM

4.8 NM

1.1

2500

FENIM

*LNAV only

CATEGORY	A	B	C	D
LPV DA		408- ³ / ₄	250 (300- ³ / ₄)	
LNAV/ VNAV DA		542- ³ / ₄	384 (400- ³ / ₄)	
LNAV MDA		560- ³ / ₄	402 (500- ³ / ₄)	
C CIRCLING	600-1 442 (500-1)	620-1 462 (500-1)	720-1½ 562 (600-1½)	760-2 602 (700-2)