

WAAS CH <b>86618</b> <b>W13A</b>	APP CRS <b>134°</b>	Rwy Idg TDZE Apt Elev	<b>6000</b> <b>130</b> <b>130</b>
--	------------------------	-----------------------------	---

RNAV (GPS) RWY 13

KLEBERG COUNTY (IKG)

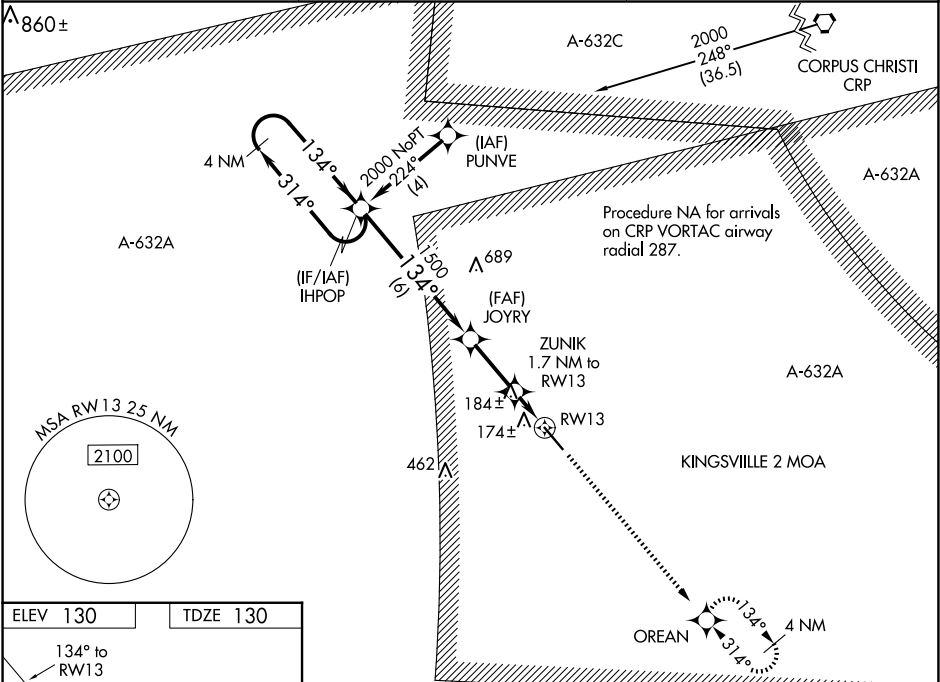
▼

NA

For uncompensated Baro-VNAV systems, LNAV/VNAV NA below -15°C (5°F) or above 48°C (118°F). DME/DME RNP-0.3 NA. Visibility reduction by helicopters NA. When local altimeter setting not received, use Alice altimeter setting and increase all DA 33 feet and all MDA 40 feet and LPV all Cats, LNAV/VNAV all Cats, and LNAV Cat D visibility ¼ mile. Baro-VNAV and VDP NA when using Alice altimeter setting.

MISSED APPROACH: Climb to 2000 direct OREAN and hold.

AWOS-3P <b>119.075</b>	KINGSVILLE APP CON ★ <b>119.9 290.45</b>	UNICOM <b>122.7 (CTAF) 0</b>
---------------------------	---	---------------------------------



ELEV 130

TDZE 130

134° to RWY 13

6000 X 75

31

REIL Rwy 13 and 31 0

MIRL Rwy 13-31 0

4 NM Holding Pattern		VGSI and RNAV glidepath not coincident (VGSI Angle 3.00/TCH 39).		2000	OREAN
GP 3.00° TCH 42		JOYRY 1500		*LNAV only	
314° 134°		ZUNIK 1.7 NM to RWY 13		*0.9 NM to RWY 13	
1500		*700		RWY 13	
6 NM		2.4 NM		0.8 0.9	
CATEGORY	A	B	C	D	
LPV DA	380-¾		250 (300-¾)		
LNAV/VNAV DA	444-1		314 (400-1)		
LNAV MDA	440-1		310 (400-1)		
CIRCLING	500-1 370 (400-1)	580-1 450 (500-1)	580-1½ 450 (500-1½)	680-2 550 (600-2)	