

WAAS CH <b>87140</b> <b>W03A</b>	APP CRS <b>029°</b>	Rwy Idg TDZE Apt Elev	<b>5000</b> <b>349</b> <b>364</b>
--	------------------------	-----------------------------	---

RNAV (GPS) RWY 3

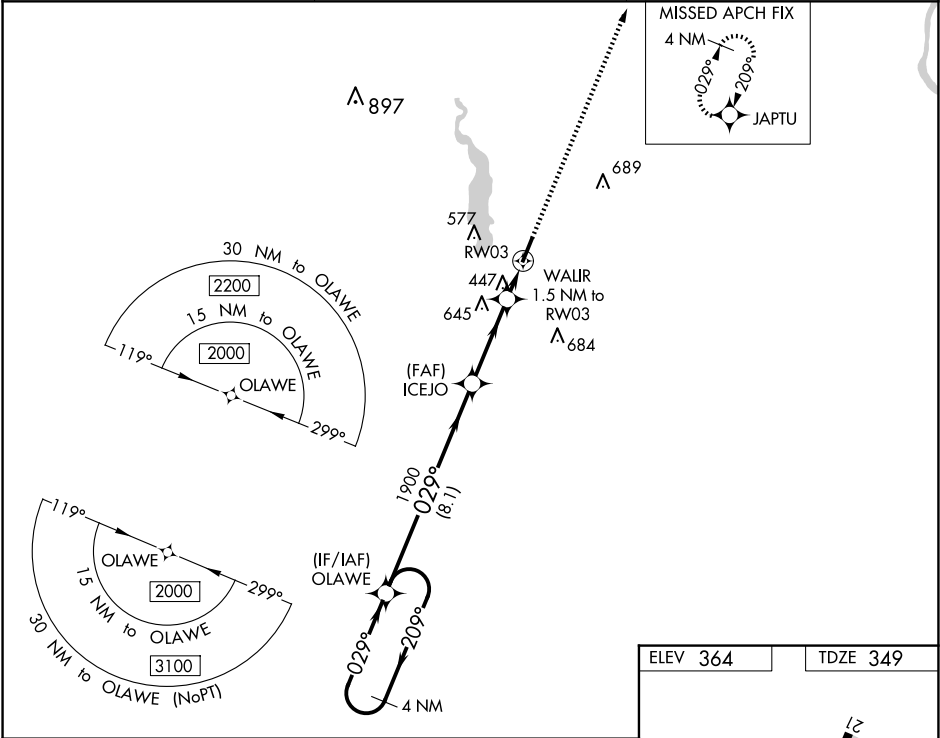
HARTSVILLE RGNL (HVS)

▼

For uncompensated Baro-VNAV systems, LNAV/VNAV NA below -9°C (15°F) or above 54°C (130°F). DME/DME RNP-0.3 NA.

MISSED APPROACH: Climb to 2100 direct JAPTU and hold.

AWOS-3 <b>118.225</b>	SHAW APP CON ★ <b>125.4 318.1</b>	UNICOM <b>122.8 (CTAF) 0</b>
--------------------------	--------------------------------------	---------------------------------



4 NM Holding Pattern

OLAWE

VGSI and RNAV glidepath not coincident (VGSI Angle 3.00/TCH28).

2100 JAPTU

GP 3.00° TCH 40

OLAWE 2000

ICEJO 1900

WALIR 1.5 NM to RW03

RW03

8.1 NM

3.3 NM

1.5 NM

\*LNAV only.

\*860

CATEGORY	A	B	C	D
LPV DA	599-1	250 (300-1)		NA
LNAV/VNAV DA	599-1	250 (300-1)		NA
LNAV MDA	700-1	351 (400-1)		NA
CIRCLING	800-1 436 (500-1)	840-1 476 (500-1)	960-1½ 596 (600-1½)	NA

