

CAIRO, ILLINOIS

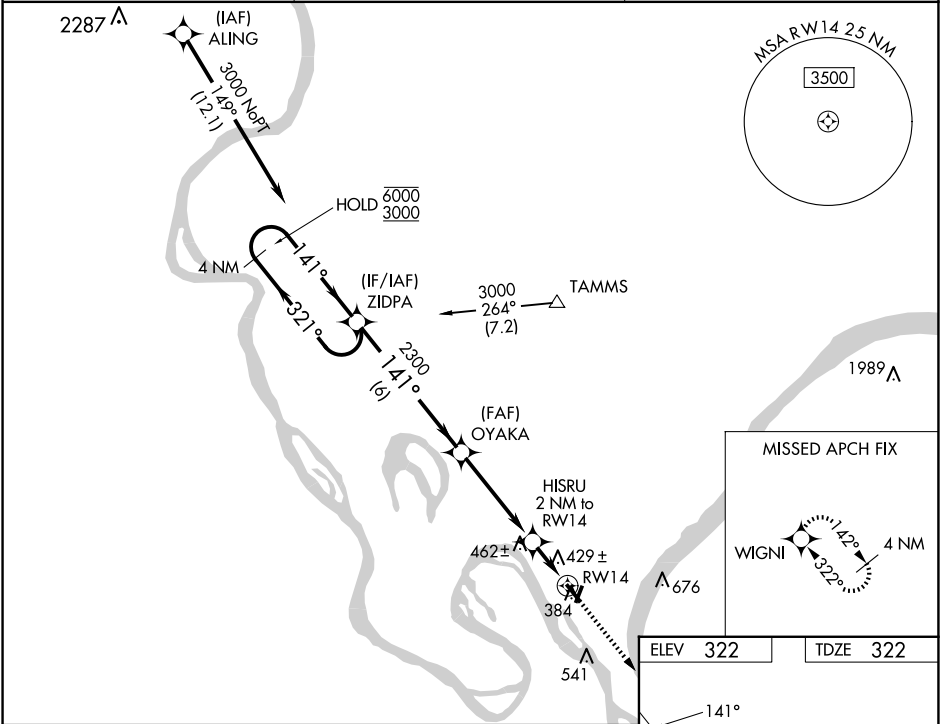
AL-5738 (FAA)

25107

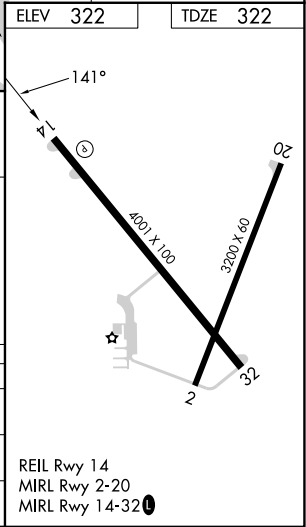
WAAS CH 77932 W14A	APP CRS 141°	Rwy Idg TDZE Apt Elev	4001 322 322
--	------------------------	-----------------------------	---

RNAV (GPS) RWY 14
CAIRO RGNL (CIR)

RNP APCH.		MISSED APPROACH: Climb to 3000 direct WIGNI and hold.
AWOS-3 118.025	MEMPHIS CENTER 133.65 292.15	UNICOM 122.8 (CTAF) 0



Visual Segment - Obstacles.				
4 NM Holding Pattern				
ZIDPA				
OYAKA				
HISRU 2 NM to RW14				
RW14				
WIGNI				
6000 3000 321° 141° 2300 980 6 NM 4.1 NM 2 NM				
CATEGORY	A	B	C	D
LP MDA	680-1 358 (400-1)			NA
LNAV MDA	720-1 398 (400-1)			NA
CIRCLING	780-1 900-1 458 (500-1) 578 (600-1)			NA



CAIRO, ILLINOIS
Orig-C 16JUL20

37°04'N-89°13'W

CAIRO RGNL (CIR)
RNAV (GPS) RWY 14

EC-3, 07 AUG 2025 to 04 SEP 2025

EC-3, 07 AUG 2025 to 04 SEP 2025