

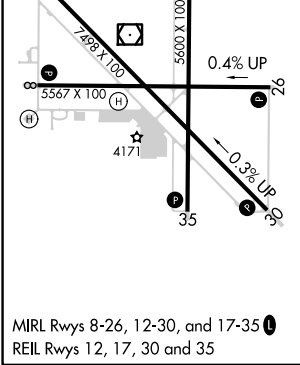
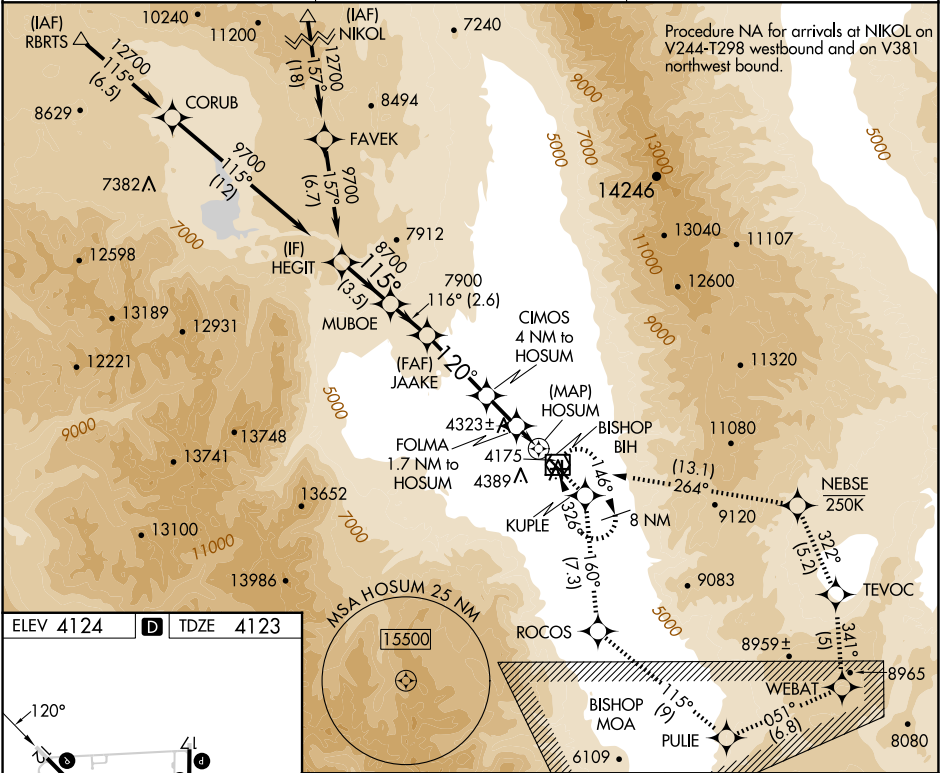
APP CRS	Rwy ldg	7098
120°	TDZE	4123
	Apt Elev	4124

RNAV (GPS) Z RWY 12

BISHOP (BIH)

RNP APCH-GPS.	MISSED APPROACH: (Do not exceed 250 KIAS until NEBSE) Climb to 13000 direct KUPLE and on track 160° to ROCOS and on track 115° to PUJIE and on track 051° to WEBAT and on track 341° to TEVOC and on track 322° to NEBSE and on track 264° to BIH VOR/DME and hold.
▼ Rwy 12, helicopter visibility reduction below ¾ SM NA. Missed approach requires minimum climb of 325 feet per NM to 11000; if unable, see RNAV (GPS) Y RWY 12.	

ASOS 119.025	OAKLAND CENTER 125.75 284.65	UNICOM 123.0 (CTAF) 0
------------------------	--	---------------------------------



Visual Segment - Obstacles.			
HEGIT	MUBOE	JAAKE	KUPLE
9700	8700	7900	6200
13000			
115°			
116°			
120°			
160°			
CIMOS 4 NM to HOSUM			
FOLMA 1.7 NM to HOSUM			
HOSUM			
3.5 NM			
2.6 NM			
4.5 NM			
2.3 NM			
1.7 NM			
1 NM			
CATEGORY	A	B	C
LNAV MDA	4580-1¼	457 (500-1¼)	NA
CIRCLING	6420-1¼ 2296 (2300-1¼)	6420-1½ 2296 (2300-1½)	6420-3 2296 (2300-3)

SW-2, 07 AUG 2025 to 04 SEP 2025

SW-2, 07 AUG 2025 to 04 SEP 2025