

APP CRS	Rwy Idg	7098
120°	TDZE	4123
	Apt Elev	4124

RNAV (GPS) Y RWY 12
BISHOP (BIH)

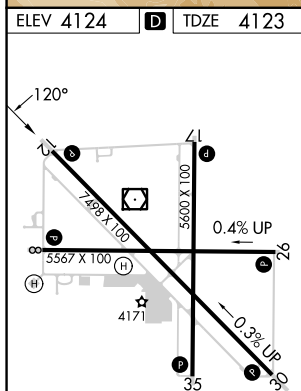
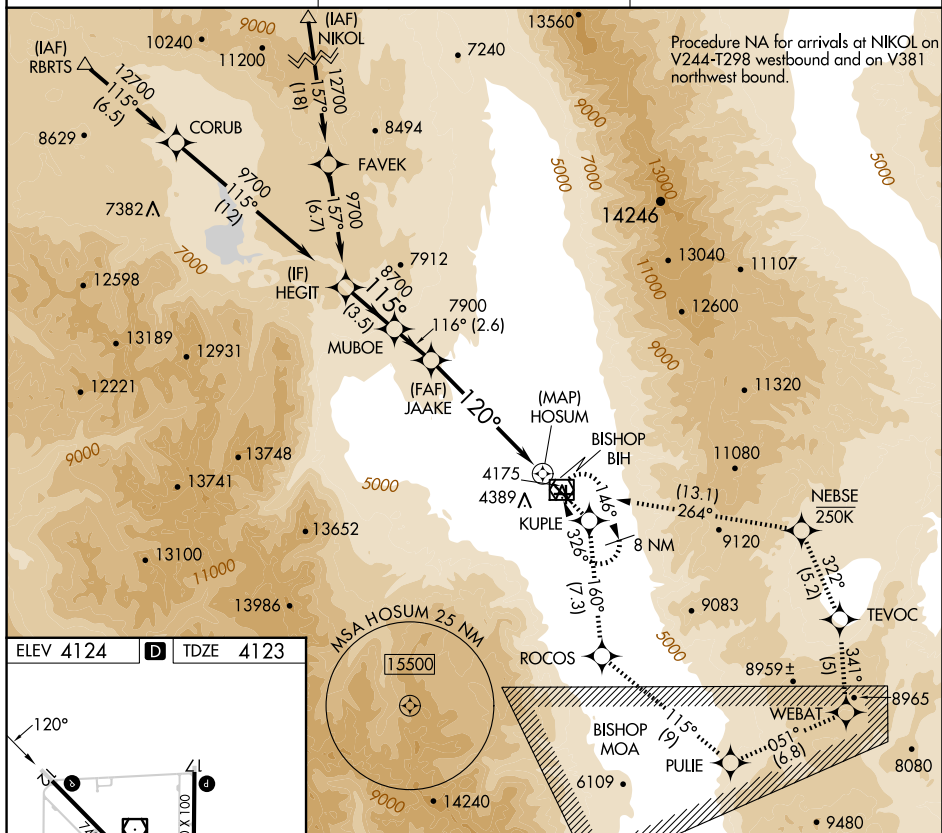
RNP APCH-GPS.

T Rwy 12, helicopter visibility reduction
A below $\frac{3}{4}$ SM NA.

MISSED APPROACH: (Do not exceed 250 KIAS until NEBSE) Climb to 13000 direct KUPLE and on track 160° to ROCOS and on track 115° to PULIE and on track 051° to WEBAT and on track 341° to TEVOC and on track 322° to NEBSE and on track 264° to BIH VOR/DME and hold.

ASOS
119.025

OAKLAND CENTER
125.75 284.65

UNICOM
123.0 (CTAF) **L**

MIRL Rwy 8-26, 12-30, and 17-35 **L**
REIL Rwy 12, 17, 30 and 35

BISHOP, CALIFORNIA

Orig-F 08SEP22

BISHOP (BIH)

37°22'N-118°22'W

RNAV (GPS) Y RWY 12

SW-2, 07 AUG 2025 to 04 SEP 2025

Visual Segment - Obstacles.					13000	KUPLE	tr 160°	ROCOS
<div><div>HEGIT</div><div>MUBOE</div><div>JAAKE</div><div>HOSUM</div></div>					<div>↑</div>	<div>✧</div>		<div>✧</div>
<div><div>9700</div><div>115°</div><div>8700</div><div>116°</div><div>7900</div><div>120°</div></div>								
<div><div>3.5 NM</div><div>2.6 NM</div><div>8.5 NM</div><div>1 NM</div></div>								
CATEGORY	A	B	C	D				
LNAV MDA	<div>6600-1¼</div> <div>2477 (2500-1¼)</div>	<div>6600-1½</div> <div>2477 (2500-1½)</div>	<div>6600-3</div> <div>2477 (2500-3)</div>	NA				