

APP CRS
301°

Rwy Ldg
TDZE
Apt Elev

6743
4111
4124

RNAV (RNP) RWY 30

BISHOP (BIH)

▼

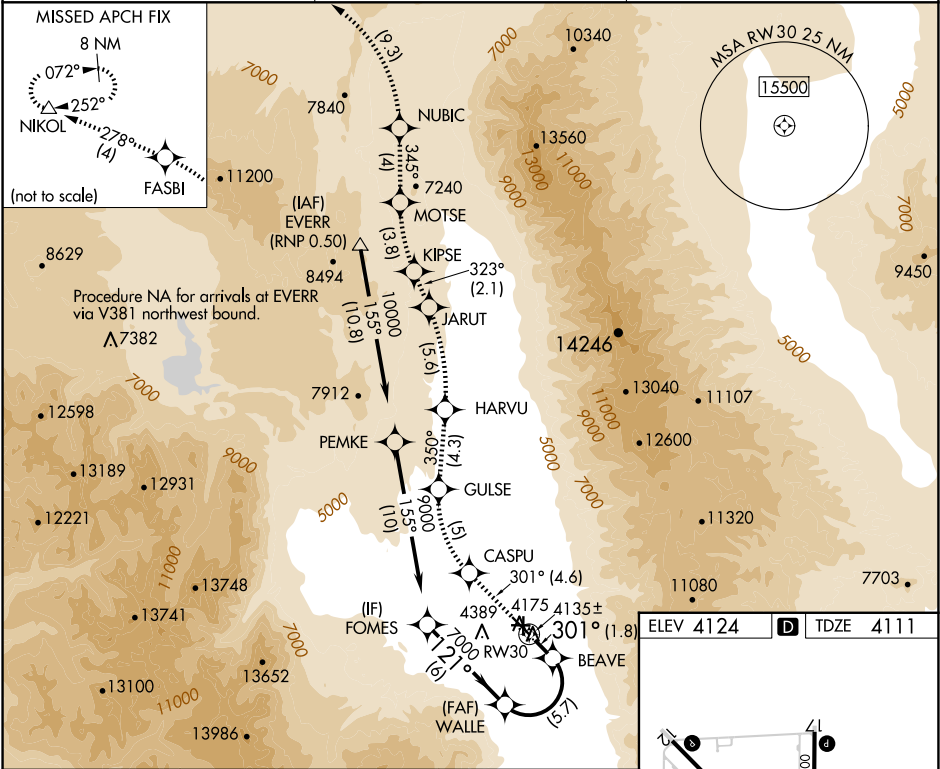
NA

RNP AR APCH, RF required.

For uncompensated Baro-VNAV systems, procedure NA below -12°C or above 54°C.

MISSED APPROACH: Climb to 13000 via 301° track to CASPU, right turn to GULSE, 350° track to HARVU, left turn to JARUT, 323° track to KIPSE, right turn to MOTSE, 345° track to NUBIC, left turn to FASBI, 278° track to NIKOL and hold.

ASOS 119.025	OAKLAND CENTER 125.75 284.65	UNICOM 123.0 (CTAF) 0
-----------------	---------------------------------	--------------------------



13000 CASPU GULSE
301° fr

Procedure Turn NA

GP 3.52°
TCH 52

WALLE BEAVE
7000 4835
RW30 301°
1.8 NM 5.7 NM 6 NM

121°
9000
7000

CATEGORY	A	B	C	D
RNP 0.30 DA	4476-1	365 (400-1)		NA

AUTHORIZATION REQUIRED

MIRL Rwy 8-26, 12-30, and 17-35
REIL Rwy 12, 17, 30 and 35