

APP CRS  
**137°**

Rwy Ldg  
TDZE  
Apt Elev

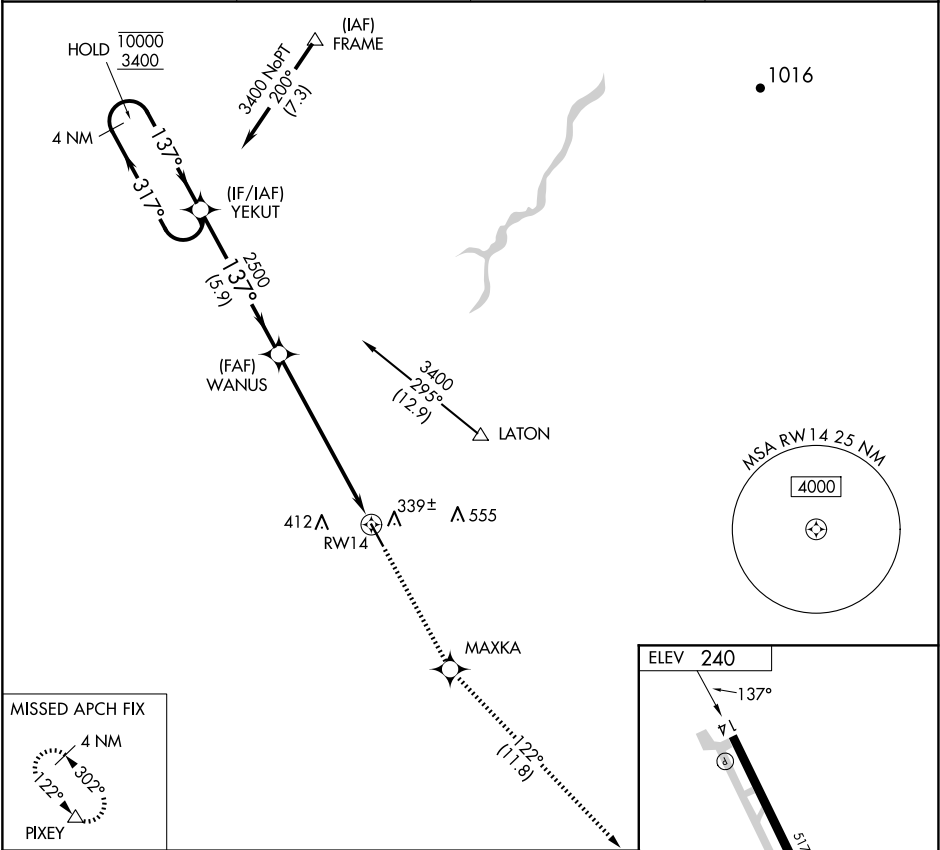
**N/A**  
**N/A**  
**240**

**RNAV (GPS)-B**  
HANFORD MUNI (HJO)

RNP APCH:  
**▼** Circling Rwy 14 NA at night.

MISSED APPROACH: Climb to 3100 direct MAXKA and on track 122° to PIXEY and hold.

ASOS <b>134.75</b>	FRESNO APP CON <b>123.9</b>	CLNC DEL <b>123.9</b>	UNICOM <b>122.8</b> (CTAF) <b>0</b>
-----------------------	--------------------------------	--------------------------	--



MISSED APCH FIX  
PIXEY  
4 NM  
122°  
302°

4 NM Holding Pattern  
YEKUT  
10000  
3400  
317°  
137°

3100  
MAXKA  
tr 122°  
PIXEY

YEKUT  
WANUS  
2500  
3.00°  
TCH 45  
RW14  
5.9 NM  
7 NM

CATEGORY	A	B	C	D
<b>C</b> CIRCLING	760-1 520 (600-1)	760-1½ 520 (600-1½)	NA	

REIL Rwy 32 **0**  
MIRL Rwy 14-32 **0**

**ELEV 240**  
137°  
5179x75  
32