

WAAS  
CH **70344**  
**W32A**

APP CRS  
**318°**

Rwy Ldg  
TDZE  
Apt Elev  
**5179**  
**238**  
**240**

**RNAV (GPS) RWY 32**

HANFORD MUNI (HJO)

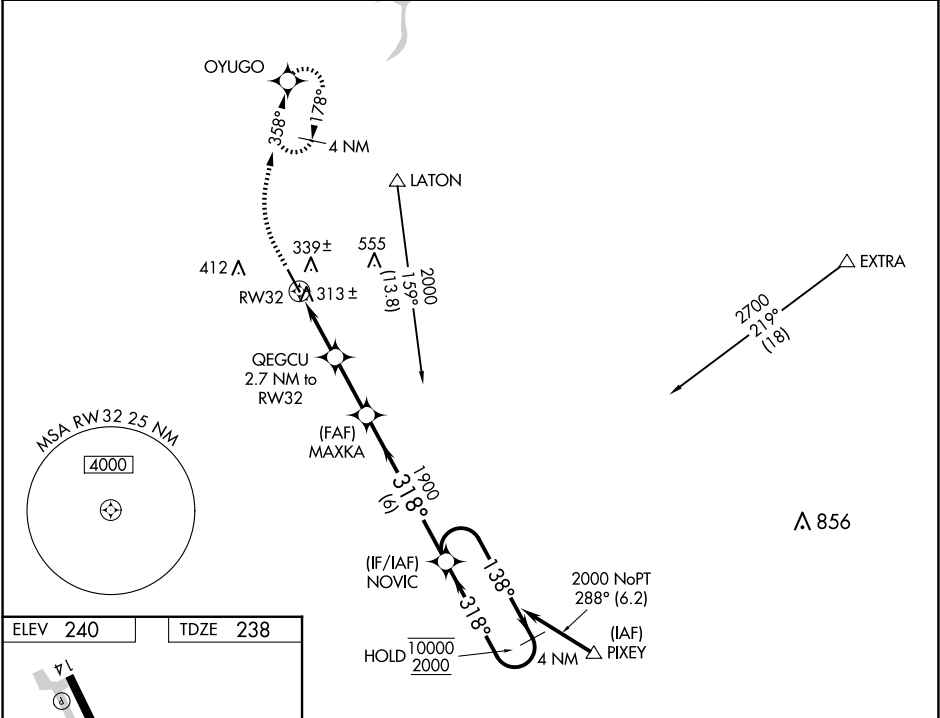
RNP APCH.

▼

Rwy 32 helicopter visibility reduction below ¾ SM NA. For uncompensated Baro-VNAV systems, LNAV/VNAV NA below -3°C or above 54°C.

MISSED APPROACH: Climb to 700 then climbing right turn to 2000 direct OYUGO and hold, continue climb-in-hold to 2000.

ASOS <b>134.75</b>	FRESNO APP CON <b>123.9</b>	CLNC DEL <b>123.9</b>	UNICOM <b>122.8 (CTAF) 0</b>
-----------------------	--------------------------------	--------------------------	---------------------------------



ELEV 240

TDZE 238

REIL Rwy 32 0

MIRL Rwy 14-32 0

700	2000	OYUGO	VGSi and RNAV glidepath not coincident (VGSi Angle 3.00/TCH 25).	
*LNAV only.		QEGCU 2.7 NM to RW32	MAXKA	NOVIC
*1 NM to RW32		1900	138°	10000
RW32		1140	318°	2000
1 NM		1.7 NM	2.4 NM	6 NM
CATEGORY	A	B	C	D
LPV DA	488-¾ 250 (300-¾)			NA
LNAV/VNAV DA	488-¾ 250 (300-¾)			NA
LNAV MDA	580-1 342 (400-1)		580-1½ 342 (400-1½)	NA