

WAAS CH 40120 W36A	APP CRS 003°	Rwy Idg 5404 TDZE 173 Apt Elev 173
----------------------------------------	------------------------	---------------------------------------------------------------

RNAV (GPS) RWY 36

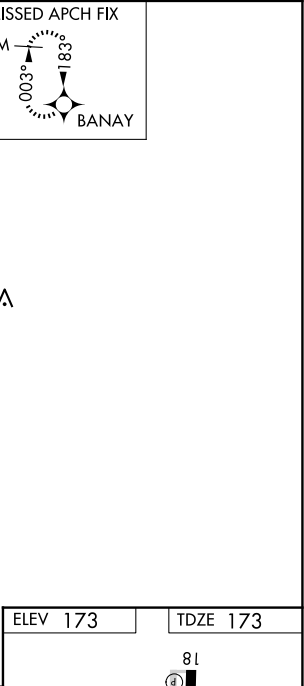
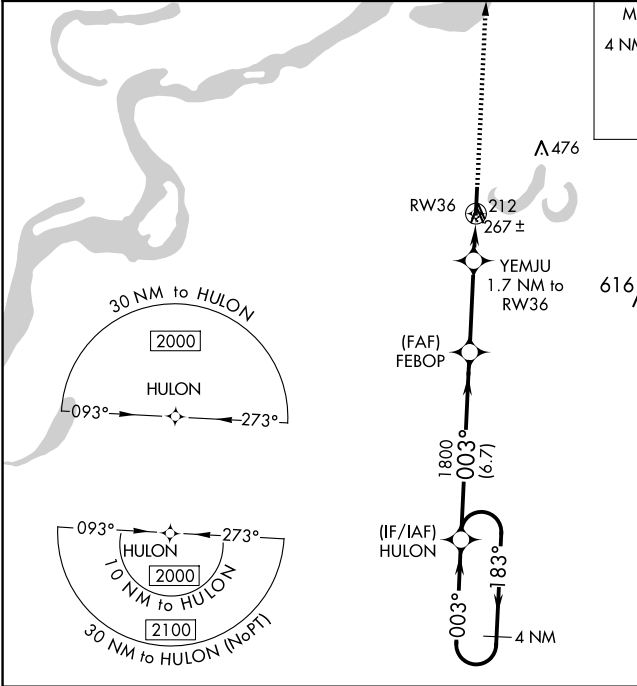
FLETCHER FLD (CKM)

RNP APCH-GPS.

▼ For uncompensated Baro-VNAV systems, LNAV/VNAV NA below -15°C or above 54°C. When local altimeter setting not received, use Tunica altimeter setting: increase LPV DA to 537 feet, LNAV/VNAV DA to 508 feet and all MDA 60 feet; increase LPV all Cats visibility ¼ SM, LNAV/VNAV all Cats visibility ⅓ SM, and LNAV Cat C/D visibility ⅓ SM. Baro-VNAV NA with Tunica altimeter setting. Straight-in/Circling Rwy 36 NA at night. Rwy 36 helicopter visibility reduction below 1 SM NA.

MISSED APPROACH:
Climb to 2000 direct BANAY and hold.

AWOS-3 120.675	MEMPHIS CENTER 135.3 335.8	UNICOM 122.8 (CTAF) 0
--------------------------	--------------------------------------	---------------------------------



4 NM Holding Pattern		HULON		FEBOP		YEMJU 1.7 NM to RW36		2000 ↑		BANAY ✦	
2000 ←183° 003°→		003°		1800		740		RW36		↗	
GP 3.00° TCH 45				6.7 NM		3.3 NM		1.7			
CATEGORY		A		B		C		D			
LPV DA		477-1		304 (400-1)							
LNAV/ VNAV DA		448-1		275 (300-1)							
LNAV MDA		520-1		347 (400-1)							
CIRCLING		740-1 567 (600-1)		780-1¾ 607 (700-1¾)		780-2 607 (700-2)					

