

RNAV (GPS) RWY 3

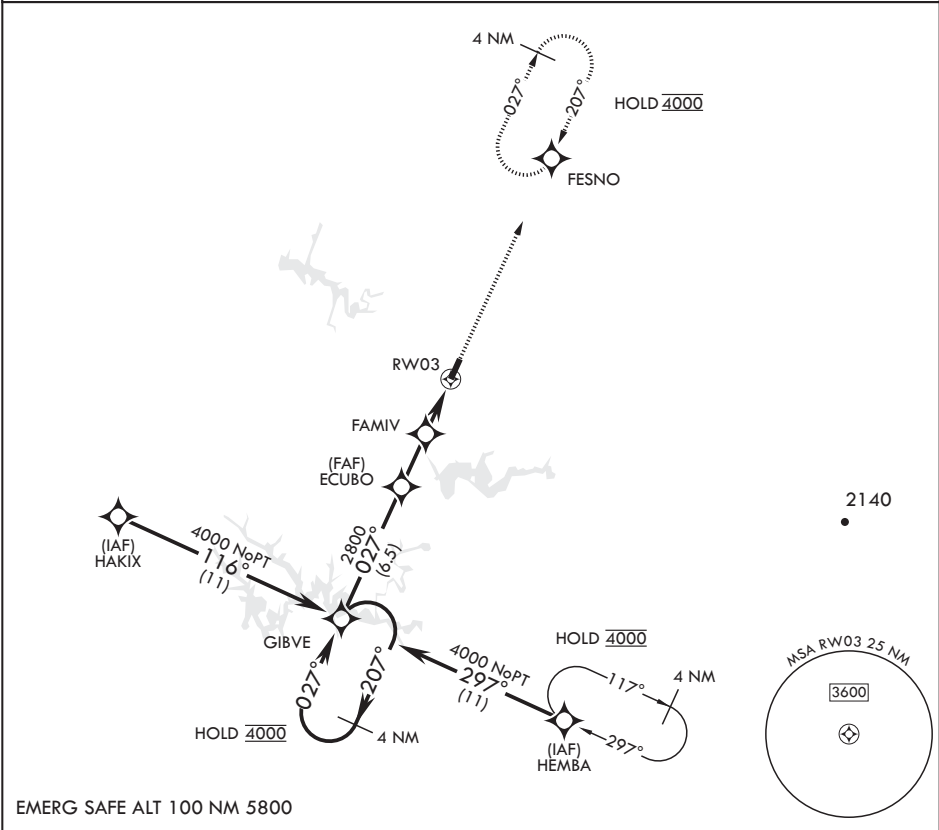
APCH CRS	Rwy Idg	6001
027°	TDZE	1065
	Arprt Elev	1065

- (USAF)

ARNOLD AFB (KAYX)

RNP APCH	MISSED APPROACH: Climb to 4000 direct FESNO and hold, continue climb-in-hold to 4000.
* Circling not authorized NW of RWY 3-21.	

UNICOM	
126.2 (CTAF) 257.975 (CTAF)	



4 NM Holding Pattern GIBVE		4000	FESNO	ELEV 1065	TDZE 1065
4000 027° 4000		2800	2000	1 NM to RWY 3	
† FAMIV to RWY 3 3.12° ≥ † TCH 40		2.6 NM	2.7 NM		
CATEGORY	A	B	C	D	
RNAV MDA	1420-1	355	(400-1)		
CIRCLING*	1520-1 455 (500-1)	1620-1 555 (600-1)	1640-1½ 575 (600-1½)	1800-2¼ 735 (800-2¼)	

RNAV (GPS) RWY 3

SE-1, 07 AUG 2025 to 04 SEP 2025

SE-1, 07 AUG 2025 to 04 SEP 2025