

MILLEDGEVILLE, GEORGIA

AL-5729 (FAA)

25163

APP CRS	Rwy Ldg	5506
096°	TDZE	385
	Apt Elev	385

# RNAV (GPS) RWY 10

## BALDWIN COUNTY RGNL (MLJ)

RNP APCH - GPS.

TA

Rwy 10 helicopter visibility reduction below  $\frac{3}{4}$  SM NA.

MALSF



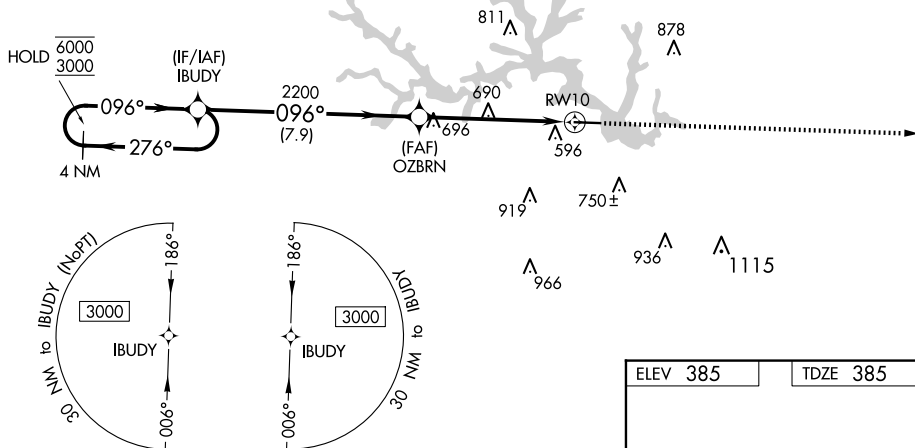
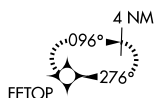
**MISSED APPROACH:** Climb to 3000 direct FETOP and hold.

AWOS-3  
120.925

ATLANTA APP CON ★  
124.2 279.6

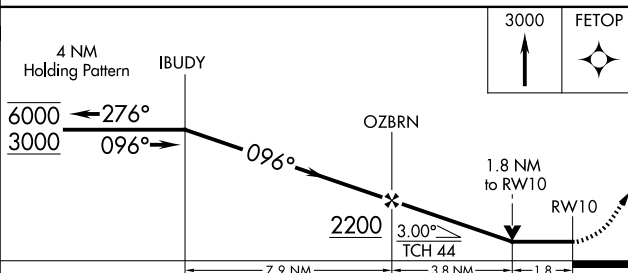
UNICOM  
122.975 (CTAF) **L**


MISSED APCH FIX

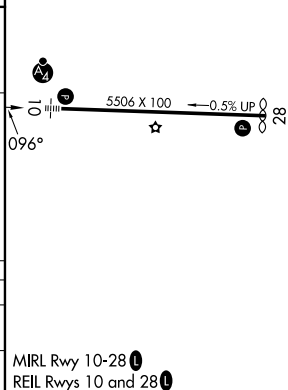


ELEV 385

TDZE 385



CATEGORY	A	B	C	D
LNAV MDA	1000-1 615 (700-1)		1000-1½ 615 (700-1½)	
 CIRCLING	1000-1 615 (700-1)		1080-2 695 (700-2)	1280-3 895 (900-3)



MILLEDGEVILLE, GEORGIA  
Amdt 3 25JAN24

33°09'N-83°14'W

BALDWIN COUNTY RGNL (MLJ)  
RNAV (GPS) RWY 10

SE-4, 07 AUG 2025 to 04 SEP 2025