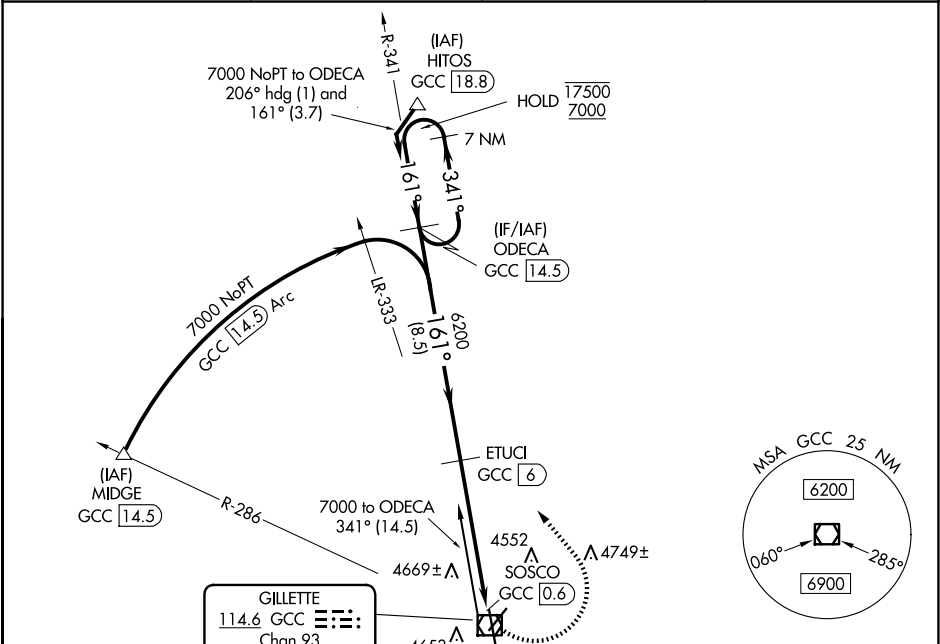


VOR/DME GCC	APP CRS	Rwy Idg	7500
114.6	161°	TDZE	4337
Chan 93		Apt Elev	4365

VOR RWY 16

NORTHEAST WYOMING RGNL (GCC)

DME required.		MISSED APPROACH: Climbing left turn to 7000 on heading 311° and GCC R-341 to ODECA/14.5 DME and hold.	
Circling Rwy 3 NA at night. Rwy 16 helicopter visibility reduction below ¾ SM NA.			
ASOS	DENVER CENTER	UNICOM	CTAF
124.175	135.6 363.025	122.95	118.5 0



ELEV 4365 D TDZE 4337			
CATEGORY	A	B	C
S-16	4920-1	583 (600-1)	4920-1¾ 583 (600-1¾)
CIRCLING	5040-1 675 (700-1)	5240-1¼ 875 (900-1¼)	5400-3 1035 (1100-3)

NW-1, 07 AUG 2025 to 04 SEP 2025

NW-1, 07 AUG 2025 to 04 SEP 2025