

WAAS CH 86204 W34A	APP CRS 341°	Rwy Idg 7500 TDZE 4365 Apt Elev 4365
--	------------------------	---

RNAV (GPS) RWY 34
NORTHEAST WYOMING RGNL (GCC)

RNP APCH.

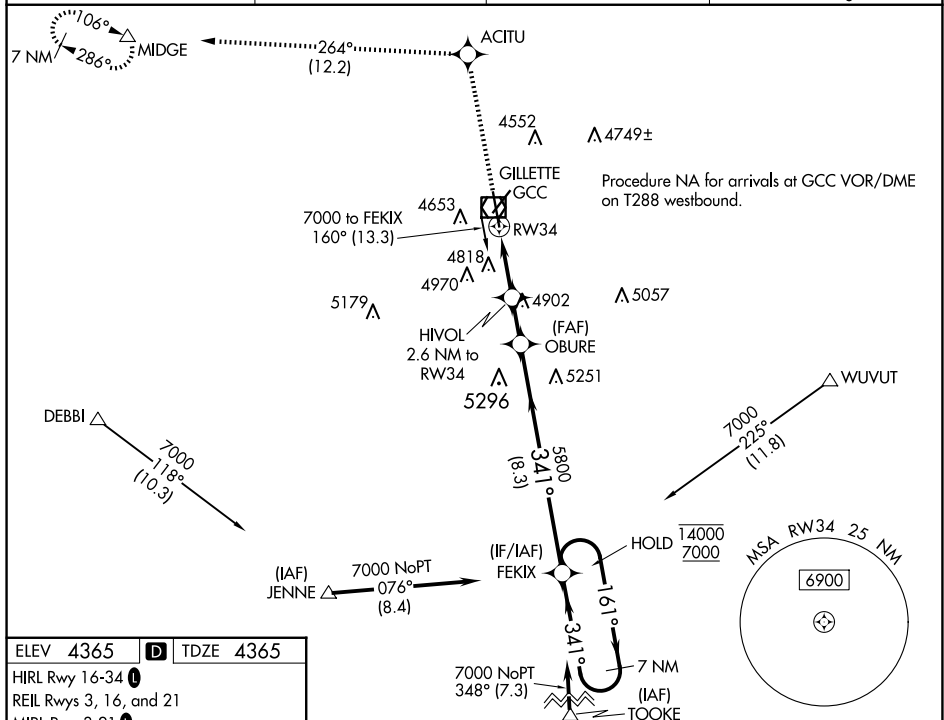
T Circling Rwy 3 NA at night. Inop table does not apply to LPV and LNAV/VNAV. For uncompensated Baro-VNAV systems, LNAV/VNAV NA below -23°C or above 54°C. **A** For inop ALS, increase LNAV Cat A visibility to 1 SM, and Cat C/D to 2 SM. Rwy 34 helicopter visibility reduction below $\frac{3}{4}$ SM NA.

MALSR



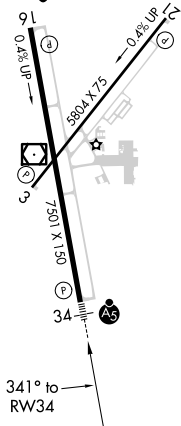
MISSED APPROACH:
Climb to 7000 direct
ACITU and on track 264°
to MIDGE and hold.

ASOS 124.175	DENVER CENTER 135.6 363.025	UNICOM 122.95	CTAF 118.5
------------------------	---------------------------------------	-------------------------	----------------------



ELEV 4365	D	TDZE 4365
-----------	----------	-----------

HIRL Rwy 16-34 **L**
REIL Rwy 3, 16, and 21
MIRL Rwy 3-21 **L**



CATEGORY	A	B	C	D
LPV DA		4620-3/4	255 (300-3/4)	
RNAV/VNAV DA		5480-4	1115 (1200-4)	
RNAV MDA	5120-3/4	755 (800-3/4)	5120-13/4	755 (800-13/4)
CIRCLING	5120-1 755 (800-1)	5240-11/4 875 (900-11/4)	5400-3	1035 (1100-3)