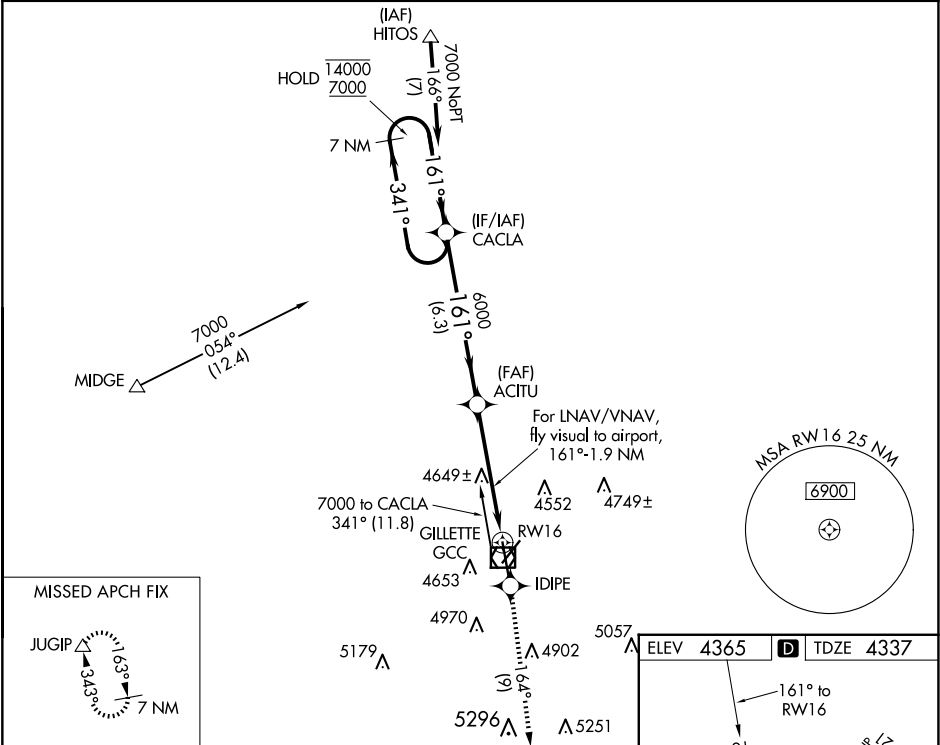


WAAS CH <b>86221</b> <b>W16A</b>	APP CRS <b>161°</b>	Rwy Idg TDZE Apt Elev	<b>7500</b> <b>4337</b> <b>4365</b>
--	------------------------	-----------------------------	---

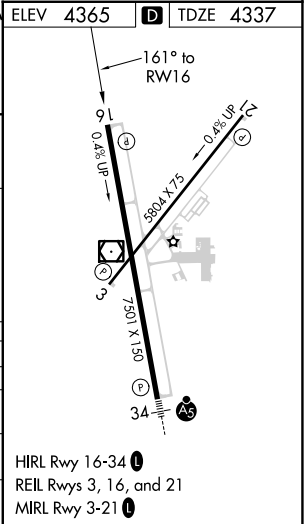
RNAV (GPS) RWY 16  
NORTHEAST WYOMING RGNL (GCC)

RNP APCH.	MISSED APPROACH: Climb to 7000 direct IDIPE and on track 164° to JUGIP and hold.
<p>▼ Circling Rwy 3 NA at night. For uncompensated Baro-VNAV systems, LNAV/VNAV NA below -23°C or above 54°C.</p>	

ASOS <b>124.175</b>	DENVER CENTER <b>135.6 363.025</b>	UNICOM <b>122.95</b>	CTAF <b>118.5 0</b>
------------------------	---------------------------------------	-------------------------	------------------------



7 NM Holding Pattern		CACLA	*LNAV only		7000 ↑	IDIPE ✦	tr 164°	JUGIP △
14000 ← 341° 7000 → 161°				ACITU 6000				
GP 3.00° TCH 45								



NW-1, 07 AUG 2025 to 04 SEP 2025

NW-1, 07 AUG 2025 to 04 SEP 2025