

PORT CLINTON, OHIO

AL-5727 (FAA)

24193

WAAS CH <b>58012</b> <b>W27A</b>	APP CRS <b>270°</b>	Rwy Idg <b>5445</b> TDZE <b>588</b> Apt Elev <b>590</b>
--	------------------------	---

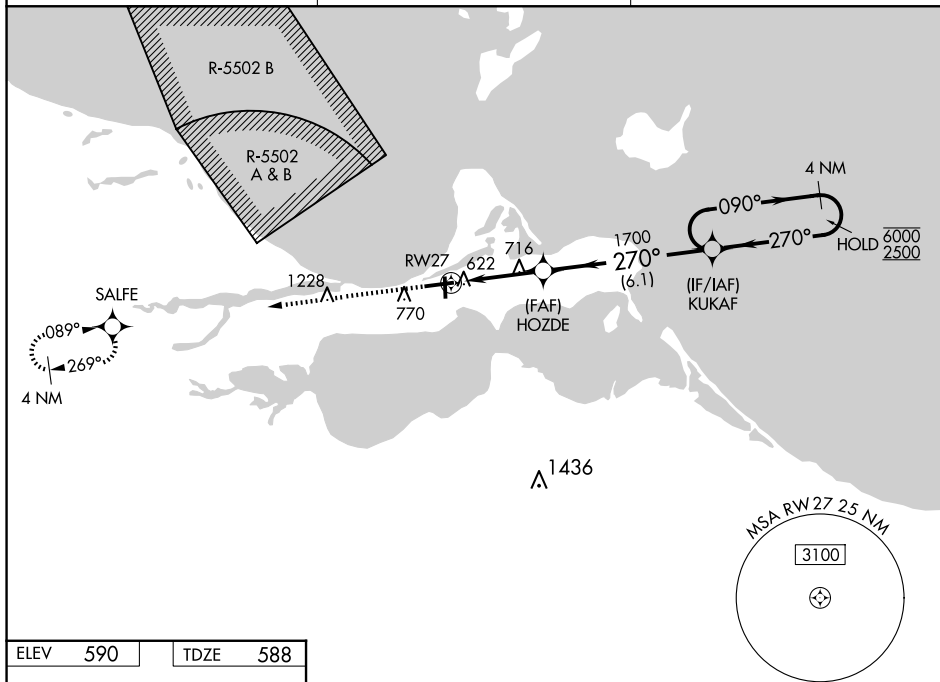
RNAV (GPS) RWY 27  
ERIE-OTTAWA INTL (PCW)

RNP APCH - GPS.

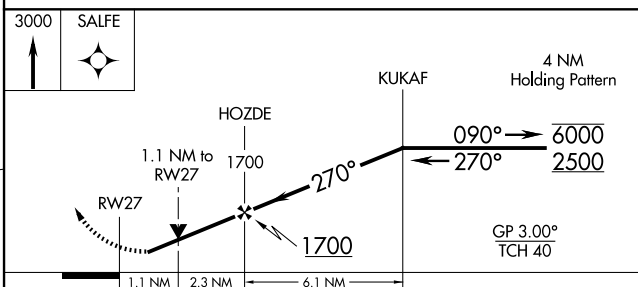
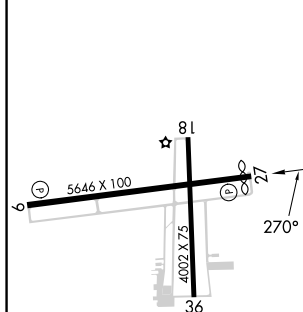
- T** Circling Rwy 18, 36 NA at night. Rwy 27 helicopter visibility reduction below 1 SM NA.  
**A** For uncompensated Baro-VNAV systems, LNAV/VNAV NA below -16°C or above 54°C.


**MISSED APPROACH:**  
Climb to 3000 direct  
SALFE and hold.

AWOS-3 <b>118.775</b>	CLEVELAND APP CON <b>126.35 346.325</b>	UNICOM <b>122.8 (CTAF) 0</b>
--------------------------	--	---------------------------------



ELEV	590		TDZE	588
------	-----	--	------	-----



CATEGORY	A	B	C	D
LPV DA	842-1		254 (300-1)	
LNAV/ VNAV DA	969-1½		381 (400-1½)	
LNAV MDA	980-1	392 (400-1)	980-1½	392 (400-1½)
 CIRCLING	1140-1	550 (600-1)	1180-1½ 590 (600-1½)	1580-3 990 (1000-3)

PORT CLINTON, OHIO  
Amdt 2 27JAN22

41°31'N-82°52'W

ERIE-OTTAWA INTL(PCW)  
RNAV (GPS) RWY 27

EC-2, 07 AUG 2025 to 04 SEP 2025

EC-2, 07 AUG 2025 to 04 SEP 2025