

WAAS CH 66002 W05A	APP CRS 053°	Rwy Idg TDZE 683 Apt Elev 683
--	------------------------	---

RNAV (GPS) RWY 5

CHARLOTTE/MONROE EXEC (EQY)

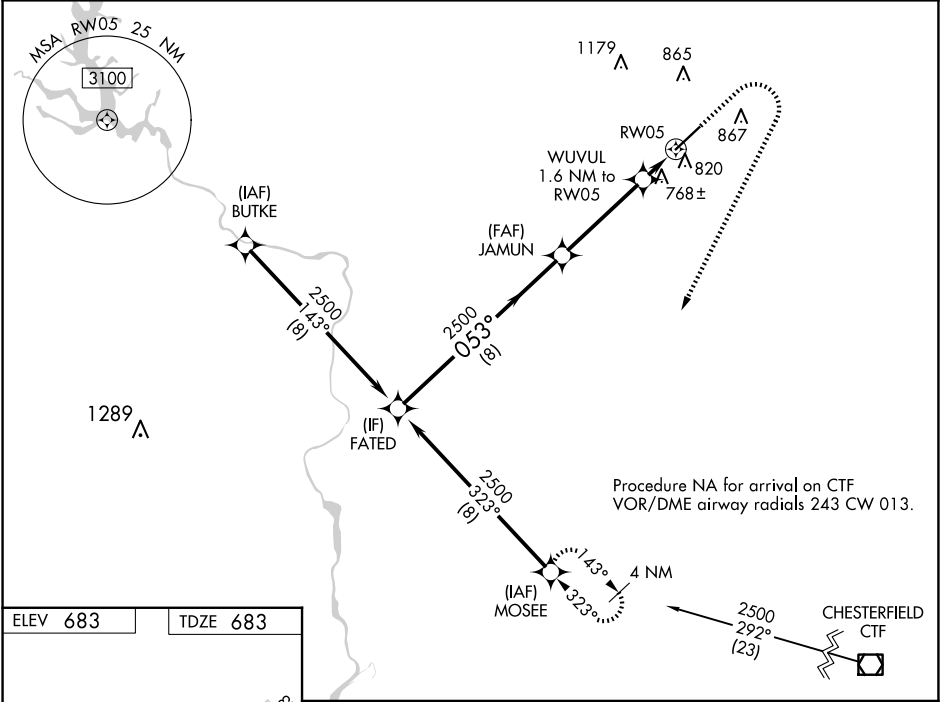
RNP APCH-GPS.

Rwy 5 helicopter visibility reduction below $\frac{3}{4}$ SM NA. For uncompensated Baro-VNAV systems, LNAV/VNAV NA below -7°C or above 54°C. Inop table does not apply to LPV all Cats. For inop ALS, increase LNAV/VNAV all Cats visibility to $\frac{1}{2}$ SM and LNAV all Cats visibility to 1 SM.

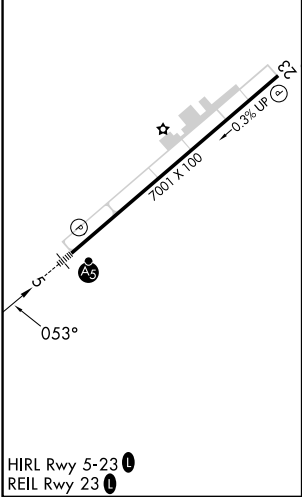
MALSR

MISSED APPROACH: Climb to 1140 then climbing right turn to 2500 direct MOSEE and hold.

ASOS 135.775	CHARLOTTE APP CON 120.05 307.8	CLNC DEL 132.55	UNICOM 122.7 (CTAF) 0
------------------------	--	---------------------------	---------------------------------



ELEV 683	TDZE 683
----------	----------



FATED		JAMUN		WUVUL 1.6 NM to RW05		RW05	
2500		053°		2500		1220	
GP 3.00°		TCH 46		8 NM		4 NM	
CATEGORY		A		B		C	
LPV DA		933- $\frac{3}{4}$		250 (300- $\frac{3}{4}$)			
LNAV/VNAV DA		1001- $\frac{3}{4}$		318 (400- $\frac{3}{4}$)			
LNAV MDA		1020- $\frac{3}{4}$		337 (400- $\frac{3}{4}$)			
CIRCLING		1220-1 537 (600-1)		1220-1 $\frac{1}{2}$ 537 (600-1 $\frac{1}{2}$)		1480-2 $\frac{1}{2}$ 797 (800-2 $\frac{1}{2}$)	