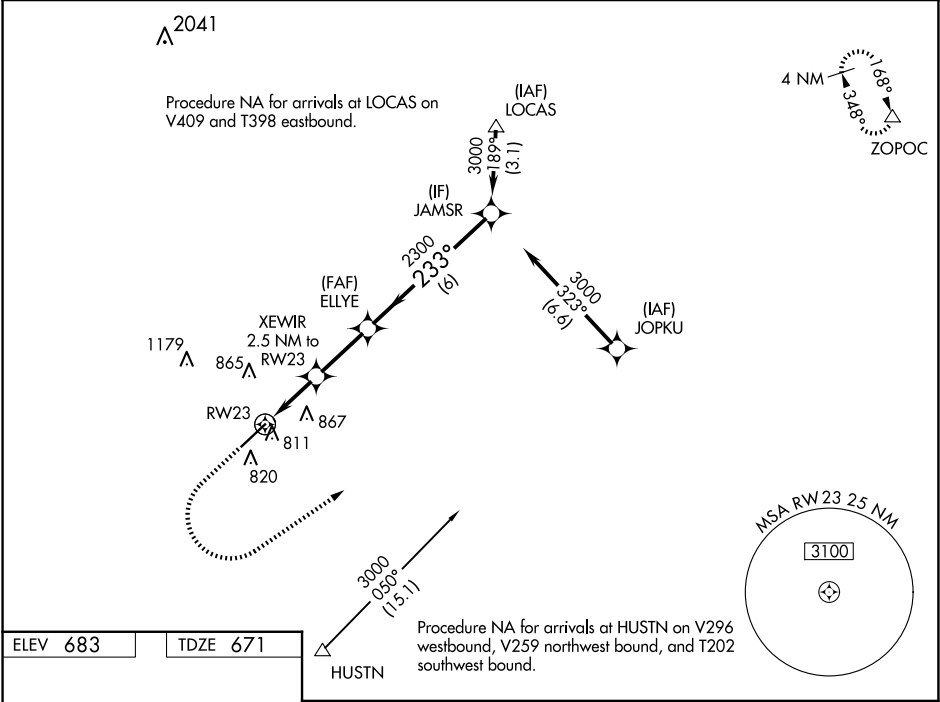


WAAS CH 90141 W23A	APP CRS 233°	Rwy Idg 7001 TDZE 671 Apt Elev 683
--	------------------------	---

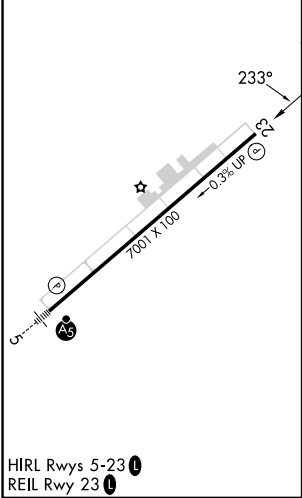
RNAV (GPS) RWY 23

CHARLOTTE/MONROE EXEC (EQY)

RNP APCH-GPS.		MISSED APPROACH: Climb to 1200 then climbing left turn to 3000 direct ZOPOC and hold.	
<div><div></div><div>Rwy 23 helicopter visibility reduction below $\frac{3}{4}$ SM NA. For uncompensated Baro-VNAV systems, LNAV/VNAV NA below -7°C or above 54°C.</div></div>		ASOS 135.775	UNICOM 122.7 (CTAF) 0
CHARLOTTE APP CON 120.05 307.8		CLNC DEL 132.55	



ELEV 683	TDZE 671
-----------------	-----------------



1200

↑

3000

↖

ZOPOC

△

XEWIR

2.5 NM to RW23

ELLYE

2300

JAMSR

3000

RW23

1.2 NM to RW23

2300

233°

GP 3.00° TCH 40

1.2 NM

1.3 NM

2.5 NM

6 NM

1480

2300

CATEGORY	A	B	C	D
LPV DA	939-1		268 (300-1)	
LNAV/VNAV DA	981-1		310 (300-1)	
LNAV MDA	1080-1 409 (400-1)		1080-1½ 409 (400-1½)	
CIRCLING	1220-1 537 (600-1)		1220-1½ 537 (600-1½)	1480-2½ 797 (800-2½)