

LOC/DME I-EQY <u>109.75</u> Chan 34 (Y)	APP CRS 053°	Rwy Idg TDZE Apt Elev	7001 683 683
---	------------------------	-----------------------------	---

ILS or LOC RWY 5
CHARLOTTE/MONROE EXEC (EQY)

DME required. RADAR required for procedure entry.

▼ Rwy 5 helicopter visibility reduction below $\frac{3}{4}$ SM NA. Inop table
▲ NA does not apply to S-ILS 5 all Cats. For inop ALS, increase S-LOC 5
 Cat A/B visibility and WUVUL fix minimums S-LOC 5 all Cats
 visibility to 1 SM.

MALSR

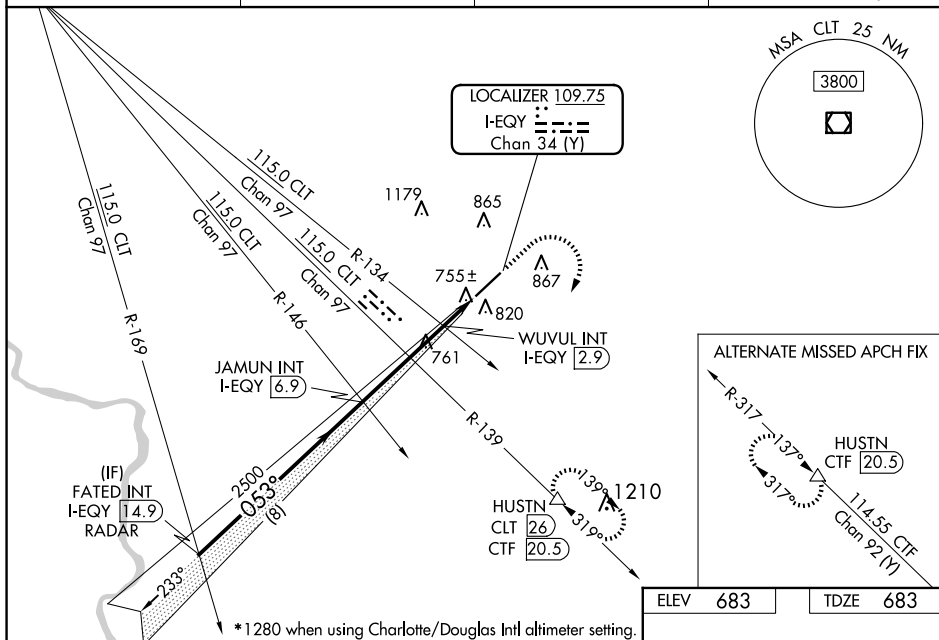


MISSED APPROACH: Climb to 1500 then climbing right turn to 3000 on heading 200° and on CLT VOR/DME R-139 to HUSTN/CLT 26 DME and hold, continue climb-in-hold to 3000.

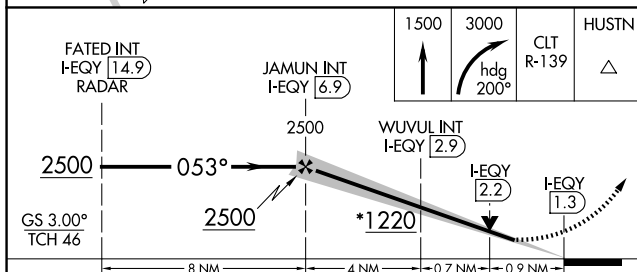
ASOS
135.775

CHARLOTTE APP CON
120.05 307.8

CLNC DEL
132.55

UNICOM
122.7 (CTAF) **L**

ELEV	683		TDZE	683
------	-----	--	------	-----



CATEGORY	A	B	C	D
S-ILS 5	933- ³ / ₄ 250 (300- ³ / ₄)			
S-LOC 5	1220- ³ / ₄	537 (600- ³ / ₄)	1220-1	537 (600-1)
C CIRCLING	1220-1	537 (600-1)	1220-1 ¹ / ₂ 537 (600-1 ¹ / ₂)	1480-2 ¹ / ₂ 797 (800-2 ¹ / ₂)
WUVUF FIX MINIMUMS (DUAL VOR RECEIVERS OR DME REQUIRED)				
S-LOC 5	1020- ³ / ₄ 337 (400- ³ / ₄)			
C CIRCLING	1220-1	537 (600-1)	1220-1 ¹ / ₂ 537 (600-1 ¹ / ₂)	1480-2 ¹ / ₂ 797 (800-2 ¹ / ₂)

