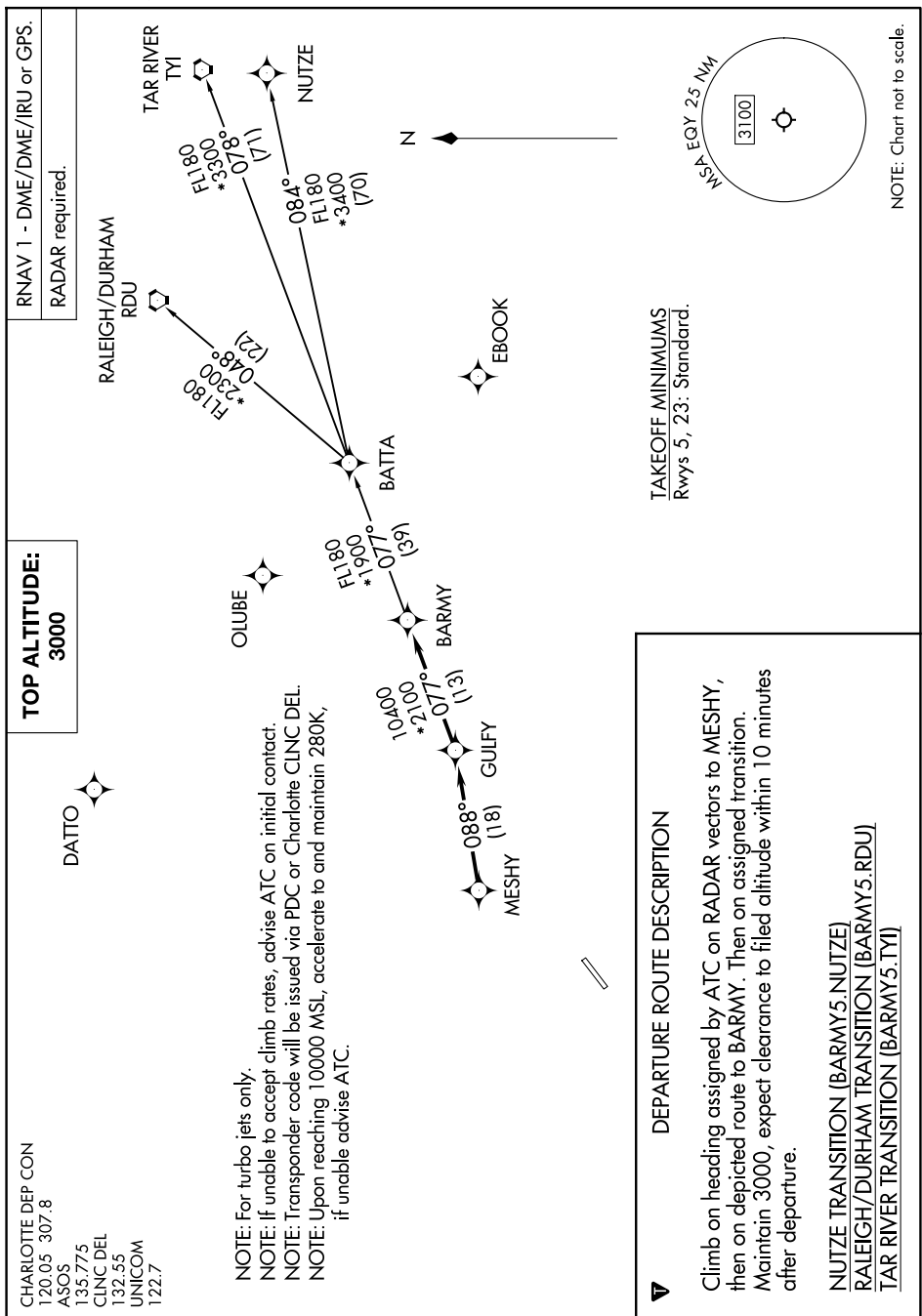


BARMY FIVE DEPARTURE (RNAV)

MONROE, NORTH CAROLINA

NOTE: Chart not to scale.



DEPARTURE ROUTE DESCRIPTION

Climb on heading assigned by ATC on RADAR vectors to MESHY, then on depicted route to BARMY. Then on assigned transition. Maintain 3000, expect clearance to filed altitude within 10 minutes after departure.

NUTZE TRANSITION (BARMY5.NUTZE)

RALEIGH/DURHAM TRANSITION (BARMY5 RDU)

TAR RIVER TRANSITION (BARMY5.TYI)

TAKEOFF MINIMUMS
Rwys 5, 23: Standard.

CHARLOTTE DEP CON
120.05 307.8
ASOS
135.775
CLINC DEL
132.55
UNICOM
122.7

NOTE: For turbo jets only.

NOTE: If unable to accept climb rates, advise ATC on initial contact.

NOTE: Transponder code will be issued via PDC or Charlotte CLNC DEL.

NOTE: Upon reaching 10000 MSL, accelerate to and maintain 280K, if unable advise ATC.

TOP ALTITUDE:
3000

RNAV 1 - DME/DME/IRU or GPS.
RADAR required.

RALEIGH/DURHAM

RDU

TAR RIVER

 O_c

008-7178

OLUBE

NUTZE

25 A.

4.

0

1

1

not to sca

1

SE-2, 01 AUG 2023 10 04 SEP 2023

BARMY FIVE DEPARTURE (RNAV)

(BARMY5.BARMY) 21MAR24

MONROE, NORTH CAROLINA
CHARLOTTE/MONROE EXEC (EQY)