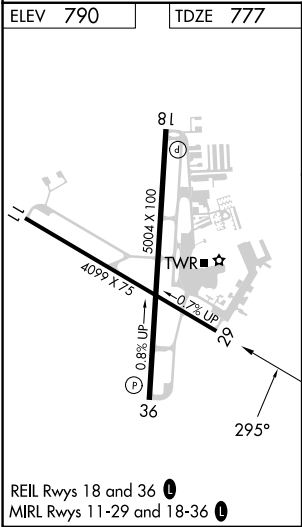
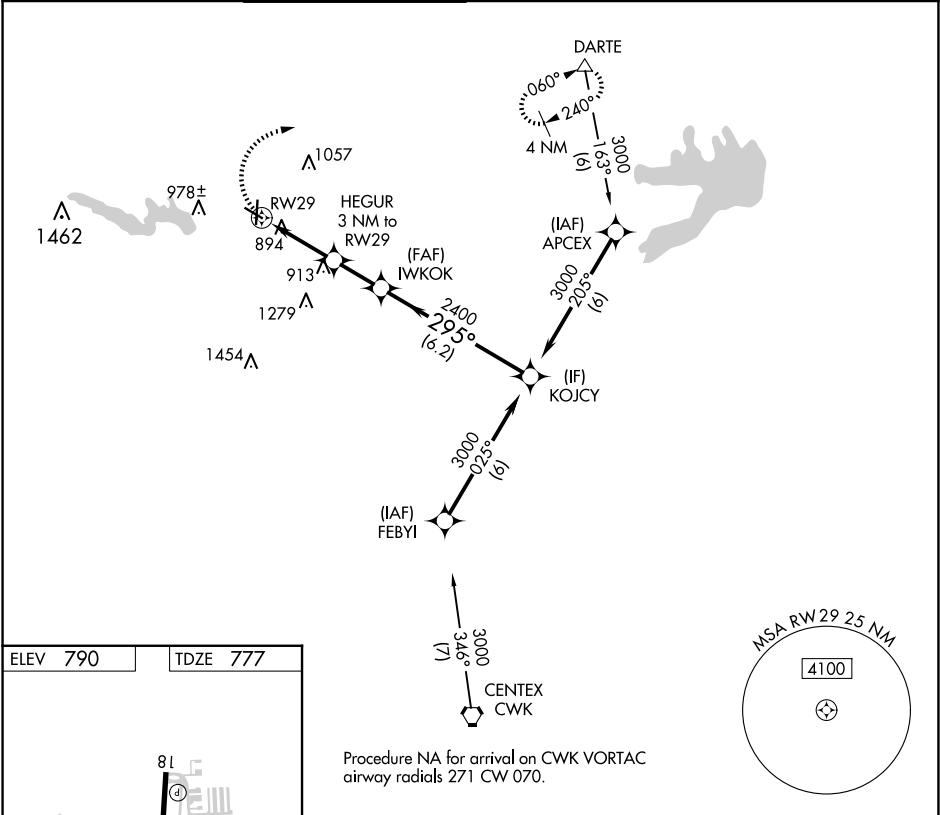


APP CRS	Rwy Idg	4099
295°	TDZE	777
	Apt Elev	790

RNAV (GPS) RWY 29  
GEORGETOWN EXEC (GTU)

RNP APCH.				MISSED APPROACH: Climbing right turn to 3000 direct DARTE and hold.		
▼ Rwy 29 helicopter visibility reduction below ¾ SM NA. VDP NA when using Skylark Field altimeter setting. When local altimeter setting not received, use Skylark Field altimeter setting and increase all MDA 80 feet increase LNAV and Circling Cat C/D visibility ¼ SM.						
ATIS	AUSTIN APP CON	GEORGETOWN TOWER ★	GND CON	CLNC DEL	CLNC DEL	UNICOM
118.6	119.0 370.85	120.225 (CTAF) 0	119.125	119.125	121.1 (when twr closed)	123.0



3000	DARTE	HEGUR 3 NM to RW29	IWKOK	KOJCY
		1.2 NM to RW29	3.04° TCH 40	3000
		1760	2400	
		1.2	1.8	2.0
CATEGORY	A	B	C	D
LNAV MDA	1220-1	443 (500-1)	1220-1¾ 443 (500-1¾)	
CIRCLING	1240-1 450 (500-1)	1340-1 550 (600-1)	1360-1½ 570 (600-1½)	1640-2¾ 850 (900-2¾)