

WAAS CH <b>62938</b> <b>W18A</b>	APP CRS <b>178°</b>	Rwy Idg <b>5004</b> TDZE <b>786</b> Apt Elev <b>790</b>
--	------------------------	---

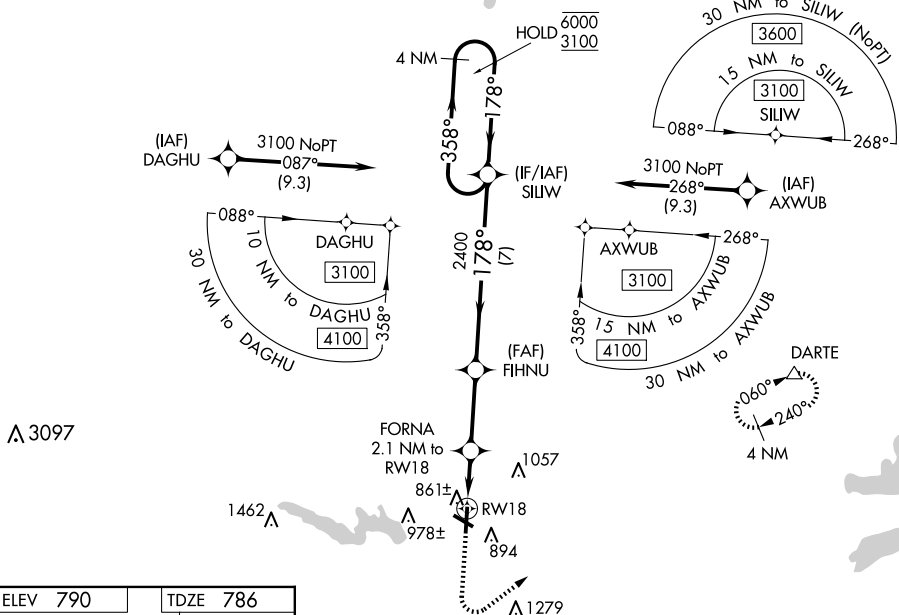
RNAV (GPS) RWY 18  
GEORGETOWN EXEC (GTU)

RNP APCH.

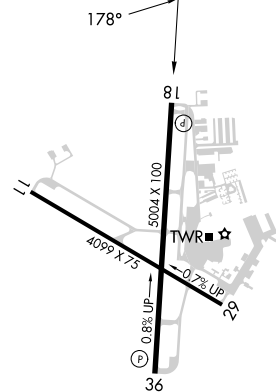
**T** Circling Rwy 29 NA at night. For uncompensated Baro-VNAV  
**A** systems, LNAV/VNAV NA below -16°C or above 54°C.

**MISSED APPROACH:** Climb to 1300 then climbing left turn to 3000 direct DARTE and hold.

ATIS <b>118.6</b>	AUSTIN APP CON <b>119.0 370.85</b>	GEORGETOWN TOWER ★ <b>120.225 (CTAF) 0</b>	GND CON <b>119.125</b>	CLNC DEL <b>119.125</b>	CLNC DEL <b>121.1</b> (when twr closed)	UNICOM <b>123.0</b>
----------------------	---------------------------------------	---	---------------------------	----------------------------	---	------------------------



ELEV 790	TDZE 786
----------	----------



REIL Rwys 18-36 **L**  
MIRL Rwys 11-29 and 18-36 **L**

GEORGETOWN, TEXAS  
Amdt 2A 15AUG19

30°41'N-97°41'W

GEORGETOWN EXEC (GTU)  
RNAV (GPS) RWY 18

* LNAV only.					
CATEGORY	A	B	C	D	
LPV DA	1036-1		250 (300-1)		
LNAV/VNAV DA	1036-1		250 (300-1)		
LNAV MDA	1120-1		334 (400-1)		
<b>C</b> CIRCLING	1240-1 450 (500-1)	1340-1 550 (600-1)	1360-1½ 570 (600-1½)	1640-2¾ 850 (900-2¾)	